



**LEARNING TO FISH:
LESSONS FROM COMMUNITY BASED
CONSERVATION IN ATLANTIC CANADA &
EASTERN ARCTIC**

SUSANNA D. FULLER, PHD.

OCEANS NORTH, HALIFAX CANADA

COMMUNITY CONSERVATION RESEARCH NETWORK MAY 28TH, 2018

COMMUNITY SUPPORTED FISHERY

- Incentivise low impact fishing through increased revenue for fishermen and development of local markets
 - DO: Ensure that local governance is embedded in management structure
 - DO: Work hand in hand with local community to increase ownership
 - DON'T: Assume there is capacity for management and ownership
 - DON'T: Assume \$ is enough of an incentive
 - DON'T: Ever stop building relationships



ENGO initiated project

ASSOCIATION FOR THE PROTECTION OF THE EASTERN SHORE: OPEN NET AQUACULTURE OPPOSITION

- Community opposition to open net pen fish farming in area with wild salmon and active lobster fishery
 - DO: Be well organized with a broad base of community support
 - DO: Reach out to other allies, including private sector and ENGOs
 - DON'T: Assume community is on side on all issues
 - DON'T: Stop before legal prohibitions are in place



Community initiated

EASTERN SHORE ISLANDS AREA OF INTEREST: COMMUNITY SUPPORTED MPA?

- Proposed Marine Protected Area, largest coastal MPA in Atlantic Canada
 - DO: Engage early and build on past relationships
 - DO: Provide support when needed, be able to back off when necessary
 - DO: Challenge power structure and assumptions
 - DON'T: Assume community is equally engaged or has all the information
 - DON'T: Be afraid to wade through conflict and difficult conversations

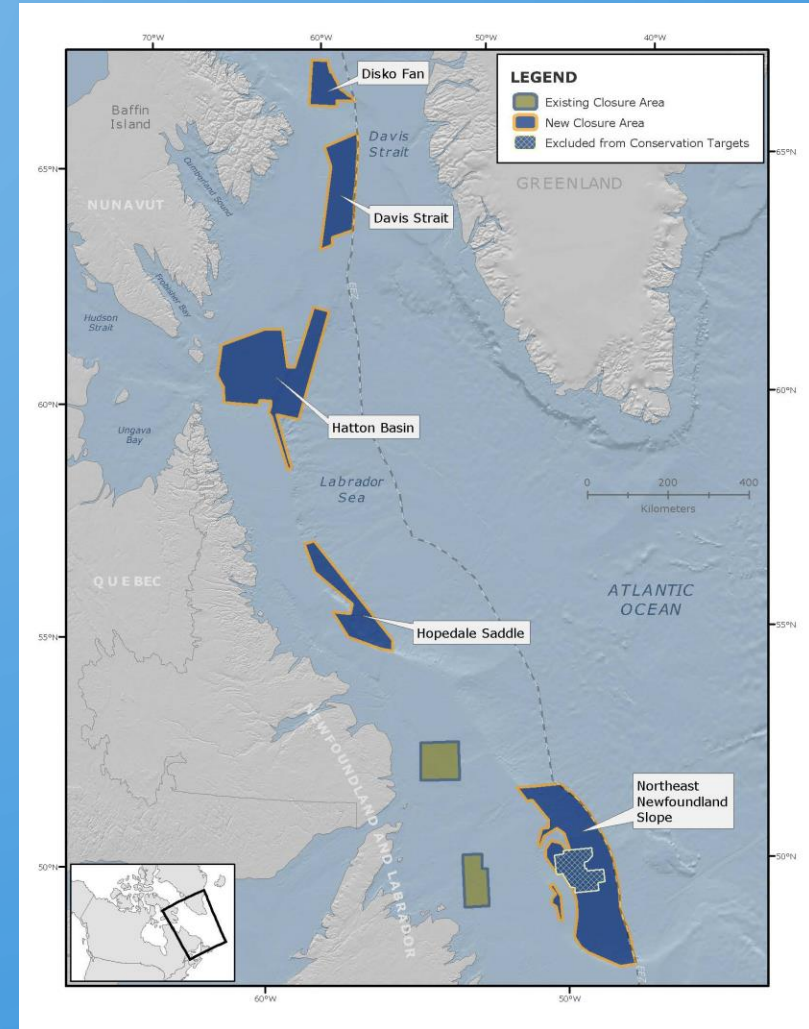


Photo: Nick Hawkins

**Government initiated, overlaps w ENGO initiated project,
Community supported?**

LINKING OFFSHORE FISHING CLOSURES TO INUIT COMMUNITIES AND CULTURE

- Implementation of coral and sponge closures towards meeting commitment for 10% protection
 - DO: Create multi-stakeholder working group, with government as secretariat and not lead.
 - DO: Bring science to the table so that everyone is working from same information.
 - DO: Maintain relationships through difficult negotiations
 - DO: Partner on communications initiatives
 - DON'T: Assume the job is done.
 - DON'T: Fail to raise related resource conflicts



Government Initiated

CRITICAL ELEMENTS OF SUCCESS / FAILURE IN COMMUNITY CONSERVATION

- Trust and relationships are critical and can never be taken for granted
- Shared goals should be determined at the outset, and revisited
- Community empowerment and capacity is key for short, medium and long term success
- ENGOs can play an important role, but need to know when to step back or tread lightly / cede capacity and power
- Important not to be tied to a specific outcome and good process is vital
- Be ready for things to go off the rails at any time