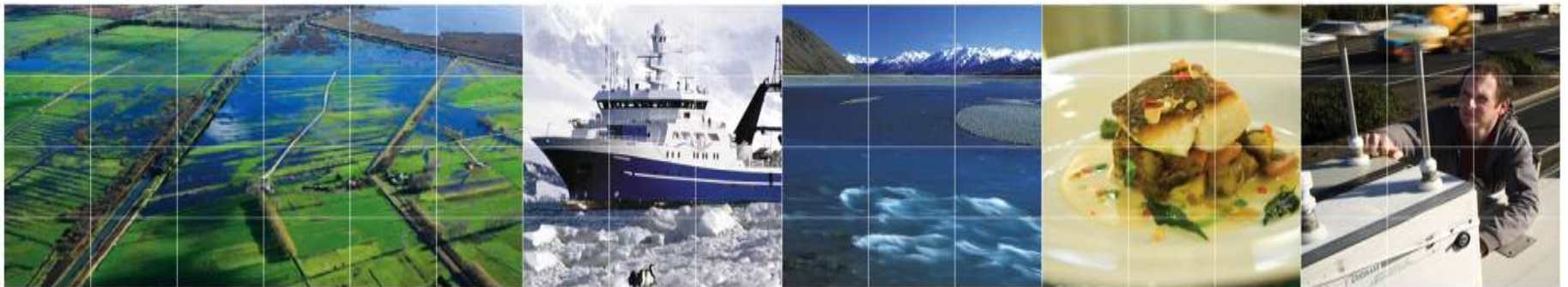




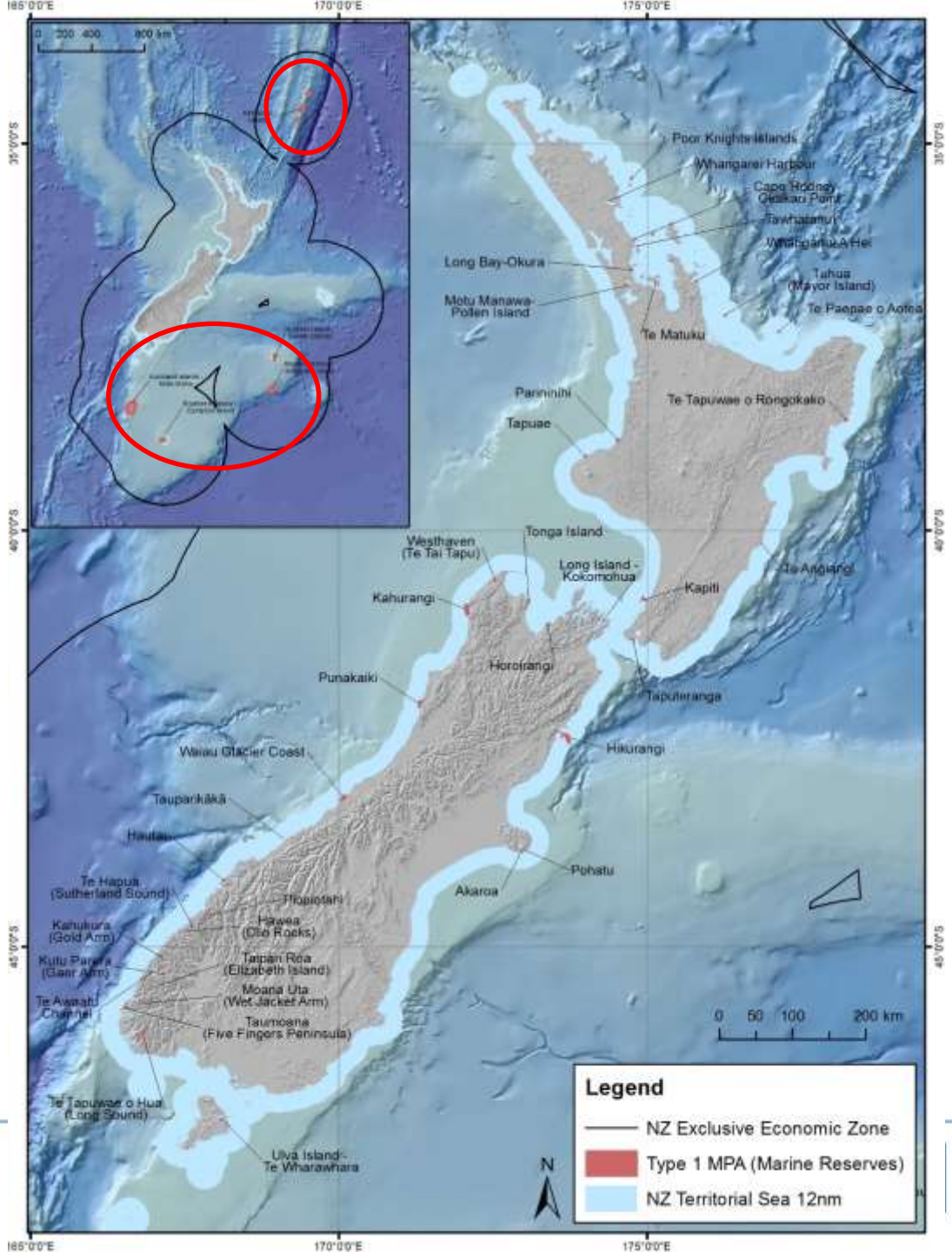
Marine Protected Area planning in Aotearoa New Zealand: Reflections on participation and process

Kate Davies, Ani Murchie, Vince Kerr, and Carolyn Lundquist





John Dory at the Poor Knights Marine Reserve off the east coast of Northland. Photography by Crispin Middleton.





Department of
Conservation
Te Papa Atawhai



Marine Protected Areas
Policy and Implementation Plan

Marine Protected Areas
CLASSIFICATION, PROTECTION STANDARD AND IMPLEMENTATION GUIDELINES
FEBRUARY 2008

Ministry for Primary Industries
Manatū Ahu Matua



Diverse and
representative
participation

Tangata whenua, Stakeholders, Public

Best available
information

Ecological/Biodiversity, Cultural, Social, Economic

Social learning
& co-productive
capacity

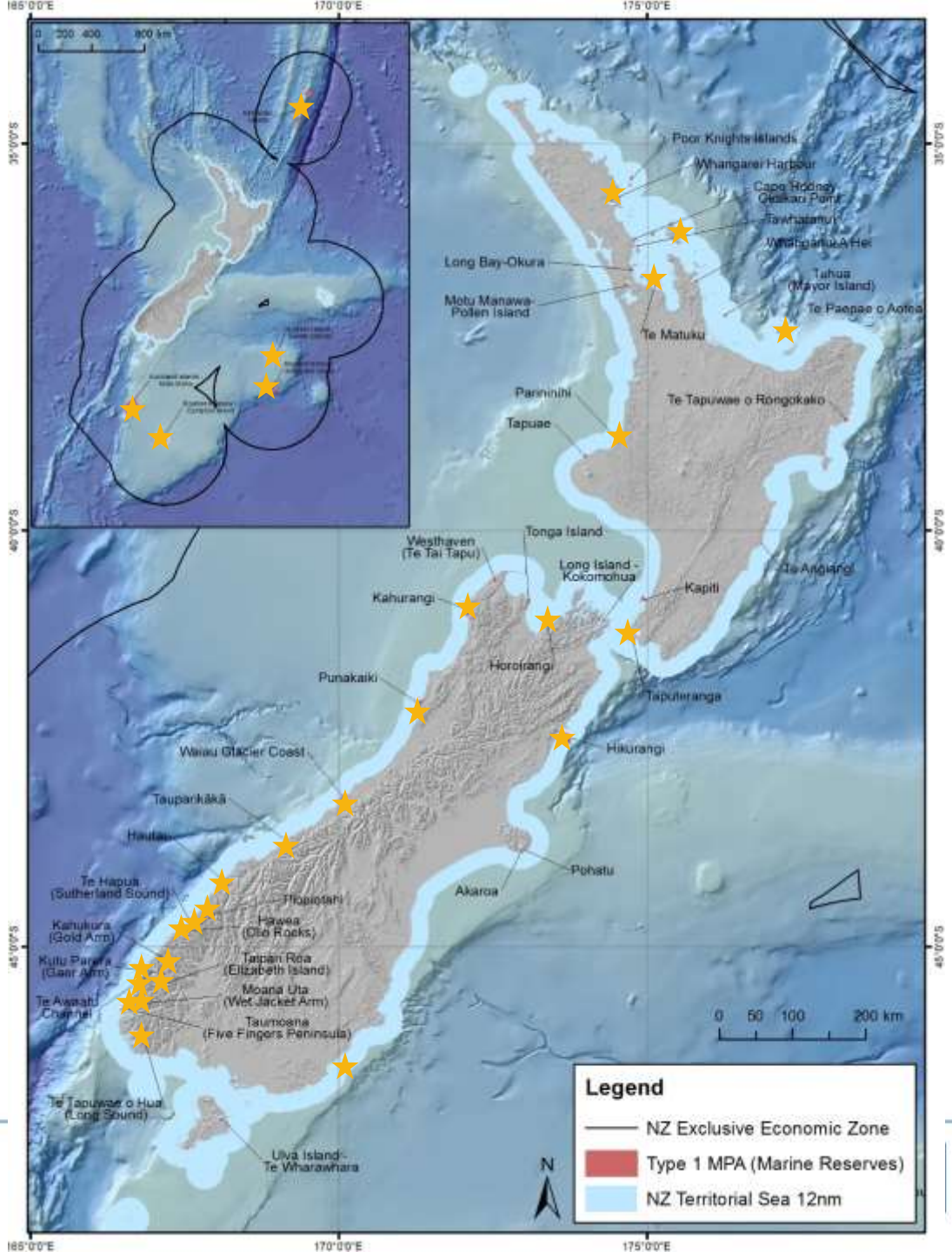
Multi-directional learning, Multiple knowledges,
Iterative/Adaptive, Trust

Fair and
respectful
process

Early engagement, Independent facilitation,
Influence over decisions

Efficient
administration

Transparency, Funding, Timeframes

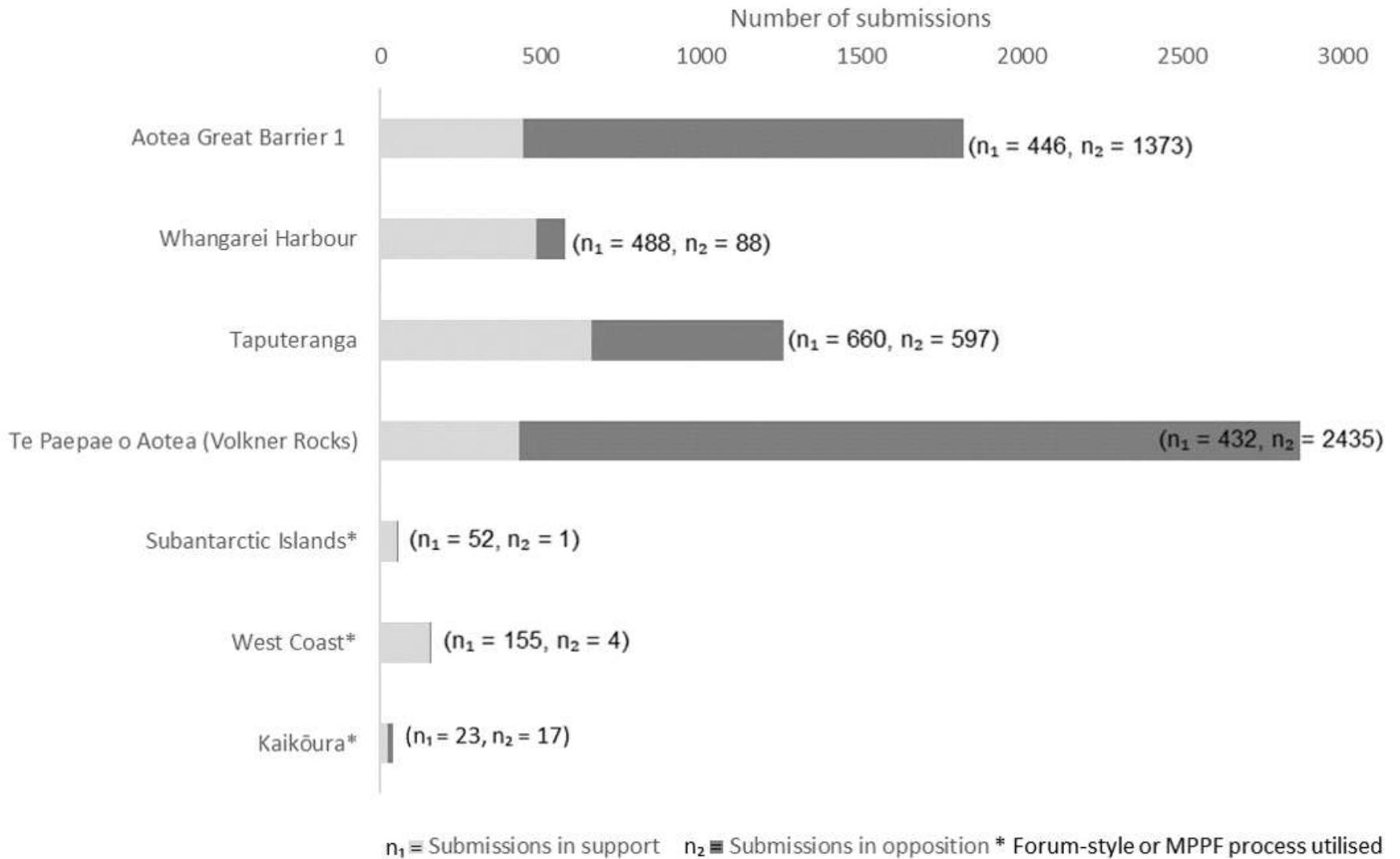




Clockwise from top left: Yellow snake star on black coral, [DOC](#); Milford Sound cruise, Lindsay Shields, [DOC](#); Butterfly perch and sponge, [DOC](#); Fiordland Marine Guardians, <https://www.stuff.co.nz/southland-times/news/92470626/plan-launched-to-keep-marine-pests-out-of-fiordland-waterways>



Clockwise from top left: Dolphin off Kaikoura, Dave Allen; https://en.wikipedia.org/wiki/Little_penguin; campbell_island_KWM_4520_credit_kyle_morrison.jpg; Heaphy Beach, [DOC](#).



2018, **Davies, K.**, Murchie, A., Kerr, V., & Lundquist, C. The evolution of marine protected area planning in Aotearoa New Zealand: reflections on participation and process. *Marine Policy* 93. <https://doi.org/10.1016/j.marpol.2018.03.025>



Weno Iti and Matahi Pott looking at paua at Mahanga Bay, Wendy St George

enhancing the benefits of New Zealand's natural resources





Data Layers

Data Layers

Search layers by name or

▶ Proposed MPAs for Pul
Boundaries

- South-East Marine Pla
- Southern South Island

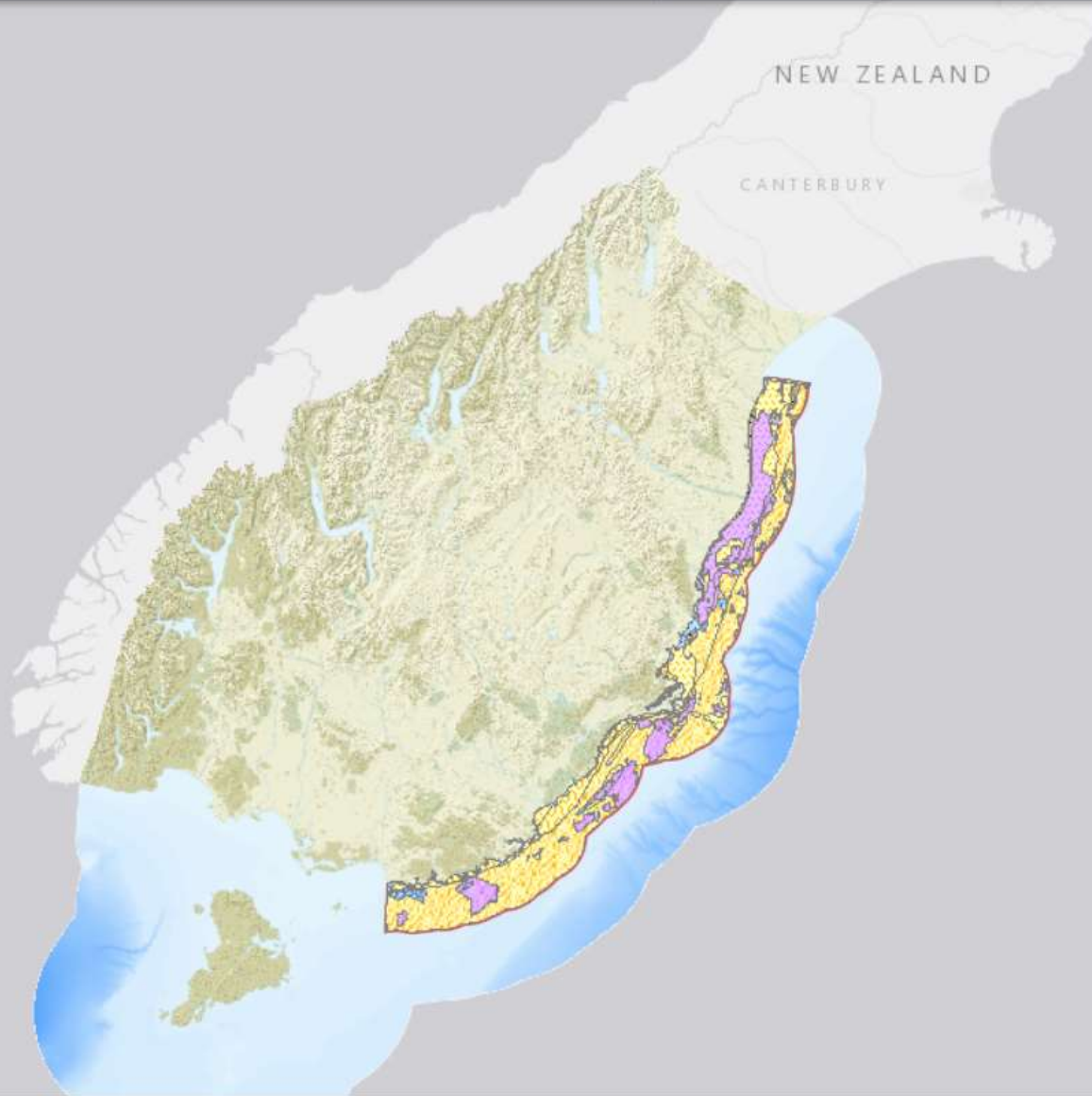
▶ Authorities

Management

- ▶ Fisheries Restrictor
- ▶ Fisheries Statistical
- ▶ Coastal Plans
- ▶ Existing Conservati
- Marae Locations
- ▶ Ngāi Tahu Claim Se
- LINZ Primary Parcels

Marine Environment

- Habitats 2017
- ▼ Biogenic Habitats
 - Macrocystis Kelp Be
- ▶ Seagrass
 - Biological Reef Indic
- ▼ Bryozoa Layers
 - Bryozoan Distrib
 - Predicted Suitab





Clockwise from top left: Iwi and stakeholder planning workshop, Kate Davies; Mussel beds at the southwest end of the Long Island Marine Reserve, Alex Connolly; <https://www.eventfinda.co.nz/2017/community-guided-snorkel-days-reotahi-summer-series/whangarei-heads>

Conclusions

- MPA planning is generally more collaborative and less adversarial today;
- These benefits can largely be traced to increasingly inclusive decision-making processes that align with an emerging 'ethic of care'.

Acknowledgements

Thank you to D. Freeman, A. Baxter, K. Blakemore, G. Funnell, D. Neale, K. May, E. Williams, P. Blackett K. Montgomery, C. Muller, B. Davies and R. Bulmer.

Funding for this project was provided by the Ministry of Business, Innovation and Employment strategic funding project [COME1701](#).