



**Communities
Conservation
Livelihoods**

Primate Conservation Through Community Empowerment and Sustainable Livelihoods

**Andrea Dempsey. BA. MSc
Country Coordinator**

**WEST AFRICAN PRIMATE CONSERVATION ACTION
May 2018**



WHO ARE WE?



ZOO HEIDELBERG

2001



18 Members





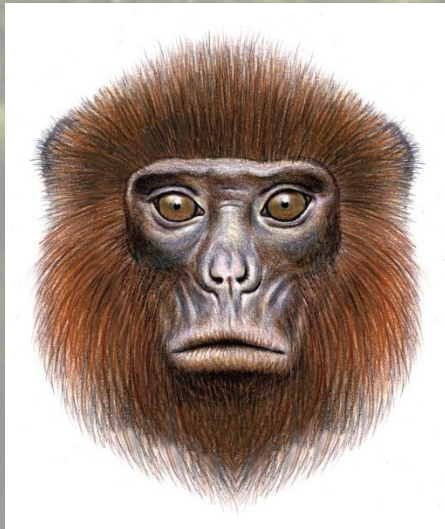
WHO ARE WE?



(c) Sheila Smith





WHAT DO WE DO?





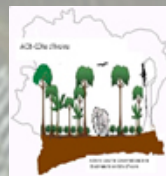
WHO DO WE DO IT WITH?

Wildlife Division of the Forestry Commission

-  Is **responsible** for the **regulation** of the utilization of forest and wildlife resources, the conservation and management of those resources and the **coordination of policies** related to them.
-  The WD is responsible for the management of **18** Protected Areas including **7** National Parks, **6** Resource Reserves, **4** Wildlife Sanctuaries, **1** Strict Nature Reserve and **5** coastal Ramsar sites.

Action pour la Conservation de la Biodiversité en Côte d'Ivoire (ACB-CI)

Centre Suisse de Recherches Scientifiques en Côte d'Ivoire (CSRS)





WHY DO WE NEED TO DO IT?





WHY DO WE NEED TO DO IT?



(c) Sheila Smith



WHY DO WE NEED TO DO IT?



(c) Sheila Smith



(c) Sheila Smith



WHY DO WE NEED TO DO IT?



(c) Sheila Smith

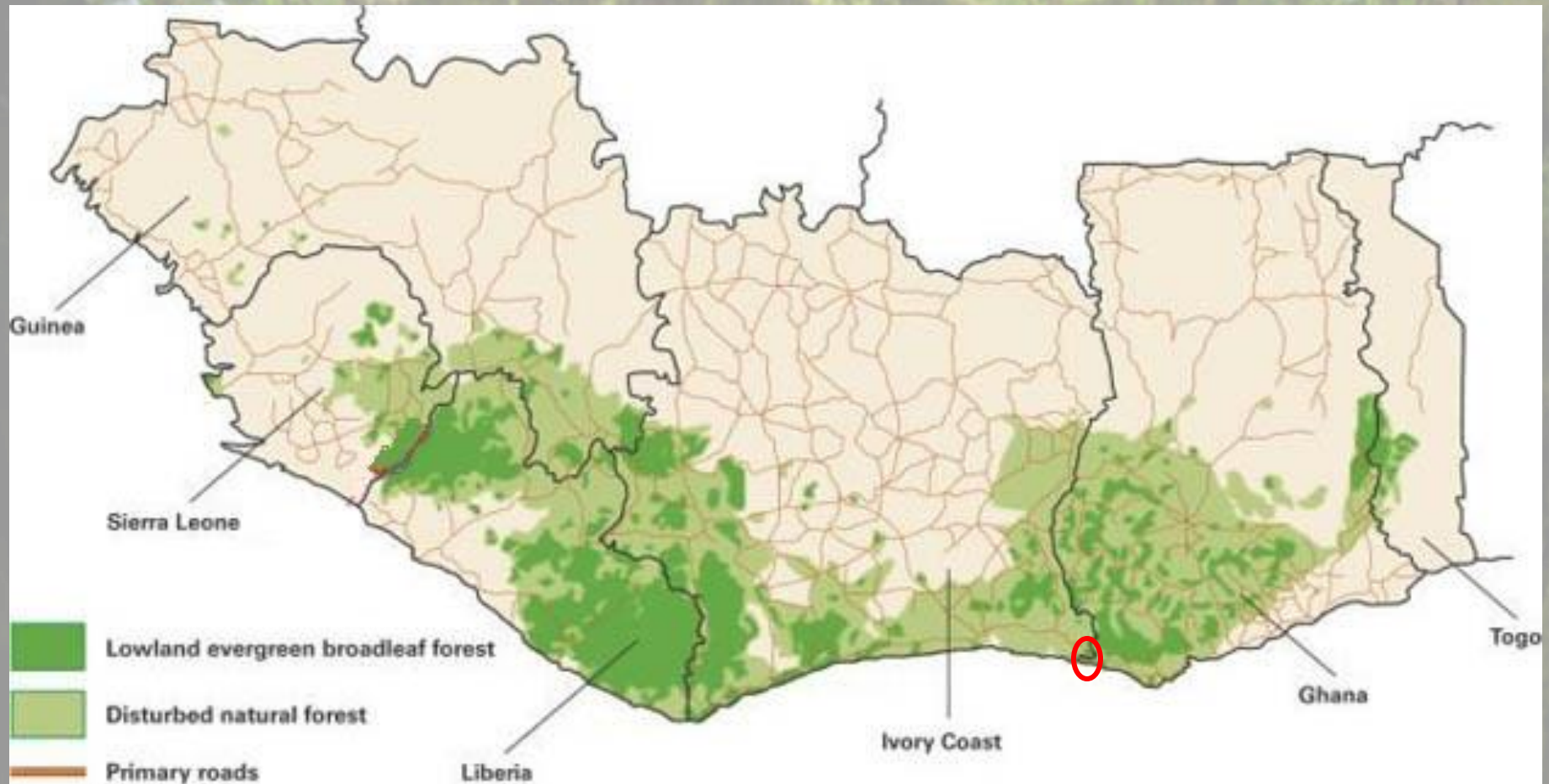


HOW DO WE DO IT?

-  **Ex-situ captive breeding**
-  **In-situ Field Work**
-  **WAPCA Research Group**
-  **Education & Awareness Raising**



FIELD WORK



Upper Guinean Rainforest – Biodiversity Hotspot



FIELD WORK – 2012 SURVEY



(c) Sheila Smith



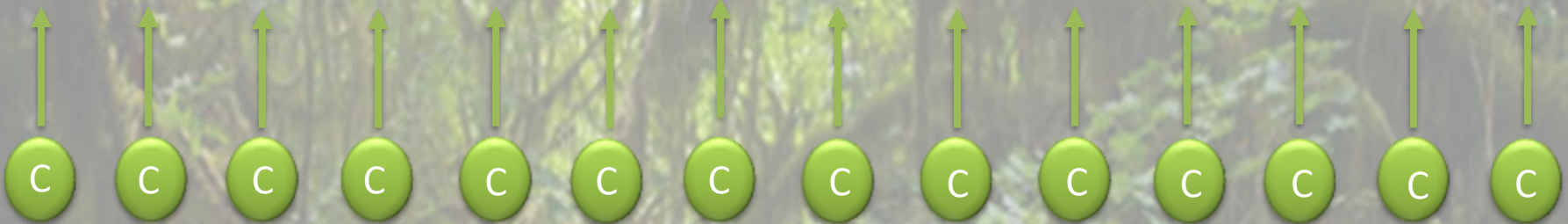
HISTORICAL OVERVIEW





CREMA

CREMA EXECUTIVE COMMITTEE (CEC)
Made up of representatives from each CRMC



Each Community has a Community Resource Management Committee (CRMC)



Neighboring communities join forces and select individuals to become members of the Community Monitoring Teams, which will patrol their section of the forest. Reporting illegal activity back to the CRMC, who either deal with it at this level or refer to the CEC.



CREMA





FOREST PATROL TEAMS





REFORESTATION & PLANTATIONS





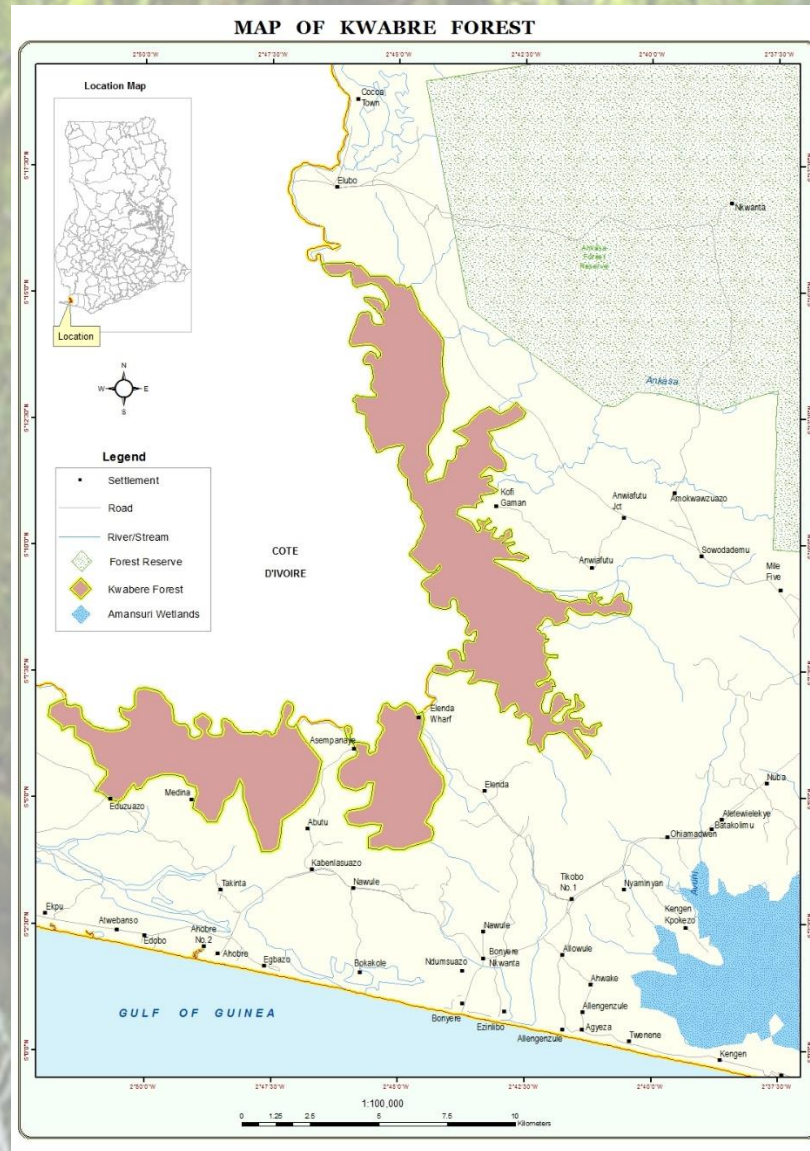
BUFFER ZONE



(c) Sheila Smith



TRANSBOUNDARY FOREST





TRANSBOUNDARY FOREST





TRANSBOUNDARY FOREST



CyberTracker

Discover, Explore and Protect Our Planet



Common monitoring protocol so data can be compared across border and over time. Creating a true understanding of the primate landscape in this area and to inform our conservation actions to achieve maximum impact.



HOLISTIC CONSERVATION

Man & Nature

- 🐒 **Improved agricultural practices**
 - 🐒 Reduces clearing for farms
 - 🐒 Organic produce/environmentally friendly
- 🐒 **Improved supply chain**
 - 🐒 Connecting with private sectors
- 🐒 **Increased income**
 - 🐒 Premium paid
- 🐒 **Conservation Fund**
 - 🐒 To fund conservation activities ensuring sustainability



WHY?

Only after the last tree has been cut down
Only after the last river has been poisoned
Only after the last fish has been caught
Only then will you find that money
cannot be eaten.



THANKS - MEMBERS





THANKS – INTERNATIONAL SUPPORTERS





THANKS – LOCAL SUPPORT





NOT ONLY BUT ALSO.....

THANK YOU FOR LISTENING

CONTACT: andrea.dempsey@wapca.org

VISIT OUR WEBSITE: www.wapca.org

FOLLOW US ON FACEBOOK @WAPCA