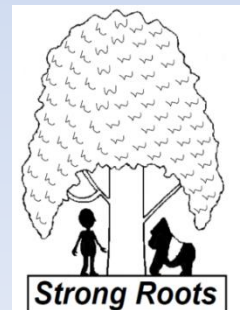


Community-Based Great Ape Habitat Restoration in the Congo (DRC)



MULAGO

Dominique Bikaba

Strong Roots Congo

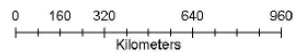
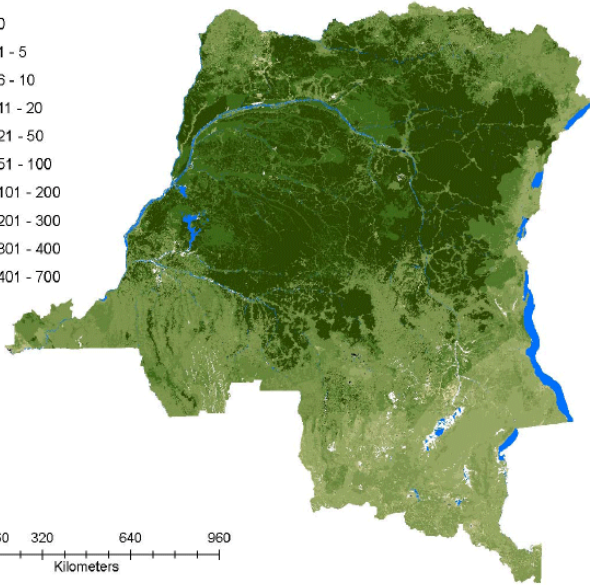
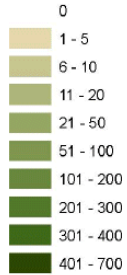


Saving Great Apes from Extinction



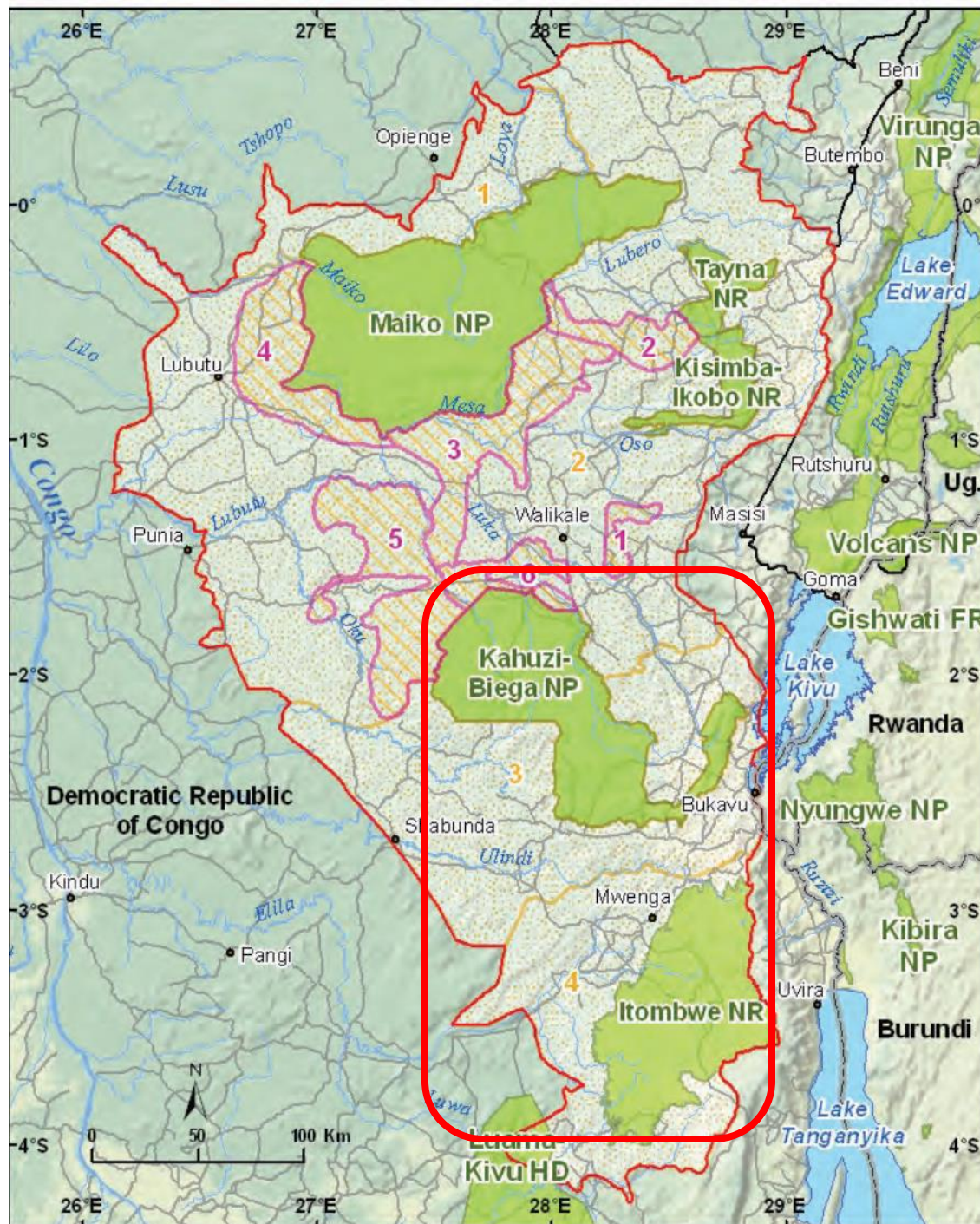


Woody biomass
t / ha

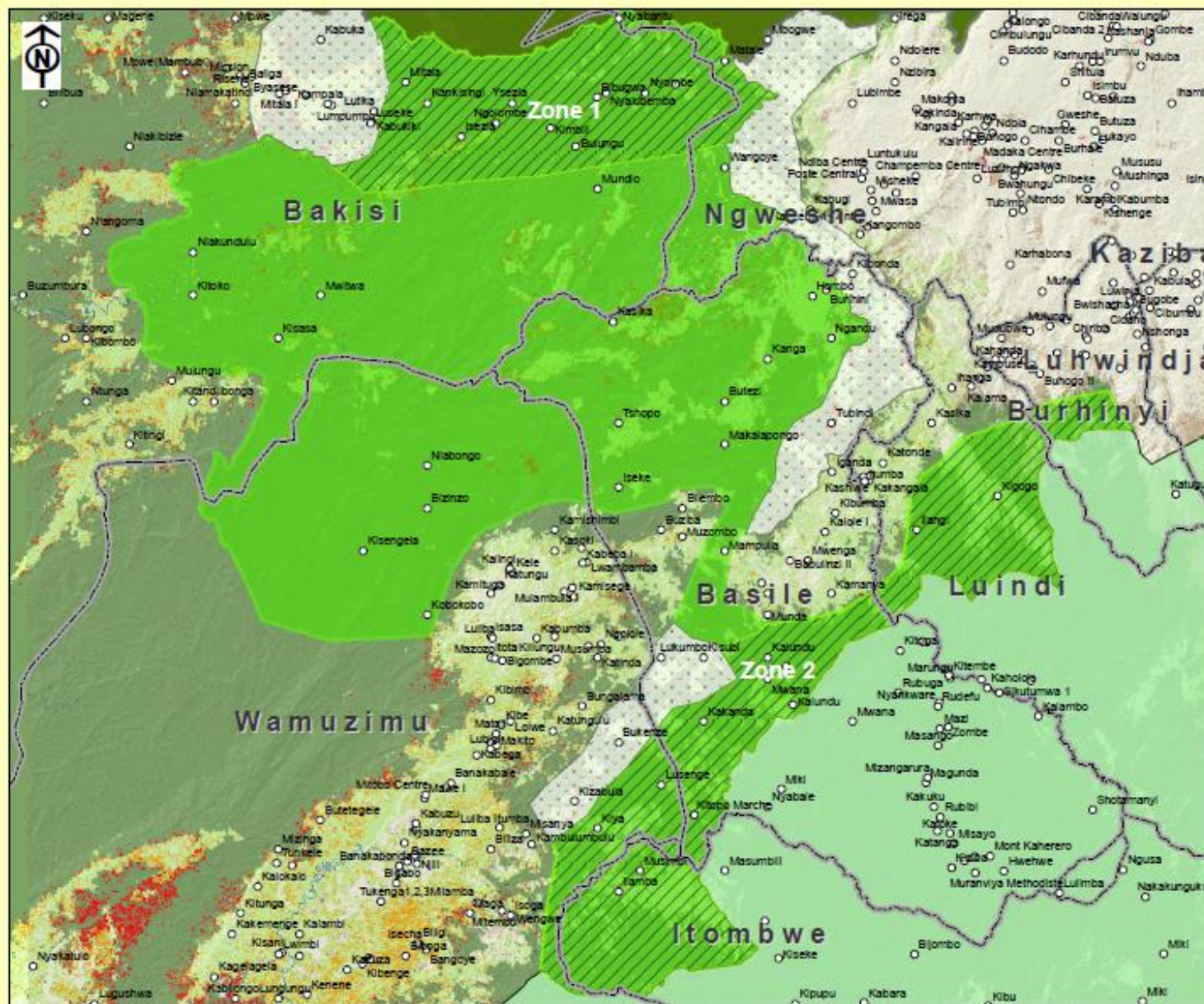




Landscape	Mammals	Birds	Reptiles	Amphibians	Plants	Total
<i>Endemic</i>	25	38	13	21	134	231
<i>Threatened</i>	19	17	0	13	28	77
<i>Richness</i>	169	651	86	73	2,226	3205



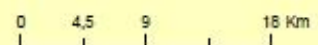
Corridor écologique entre le PNKB et la RN Itombwe



- Légende**
- Villages
 - ▭ Limites chefferies
 - ▨ Zones de reforestation
 - ▨ Presence potentielle des gorilles
 - ▭ RN Itombwe
 - ▭ Nouvelles limites
 - ▭ PN Kahuzi Biega

Superficie totale du couloir: 2779,4Km²
 Superficie totale des zones à présence potentielle des gorilles: 940,8 Km²
 - Zone 1 : 375,2 Km²
 - Zone 2 : 565,6 Km²

Superficie par chefferie:
 - Bakisi: 1103,2 Km²
 - Wamuzimu: 607,4 Km²
 - Burhinyi: 23,1 Km²
 - Luindi: 158,3 Km²
 - Basile: 643,7 Km²
 - Itombwe: 150,2 Km²
 - Ngweshe: 95,5 Km²



Project Statement:

We aim to use scientific and conservation models and our understanding of ecological and social flexibility of gorillas and chimpanzees gained by long-term studies to help with management of the **Kahuzi-Itombwe landscape Corridor**, urging the need to inspire positive participation by local people in research, land use and conservation initiatives, to promote connectivity of different patches of habitats within the landscape to analysis the prognosis and viability of relict populations of great apes species on the landscape.

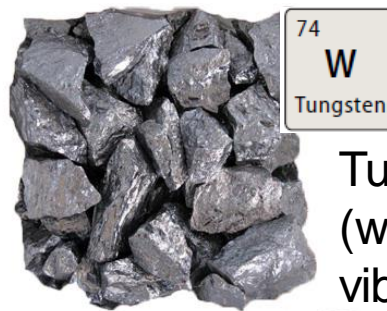


Politics and Illegal Mining

The 3Ts (or mineral ores that produce the metals Tin, Tantalum and Tungsten) and **Gold ore**



Tantalum ore: “coltan” or columbite-tantalite (which stores electricity)



Tungsten ore: wolframite (which makes units vibrate)



Tin ore: cassiterite (used for solder)

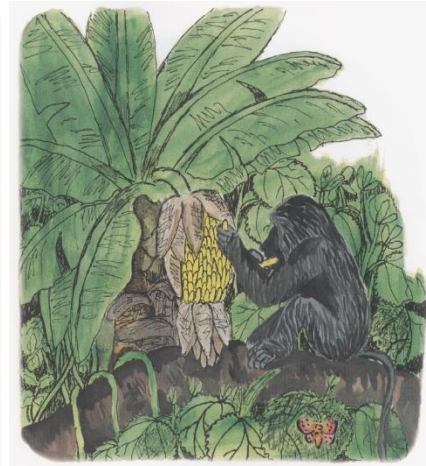
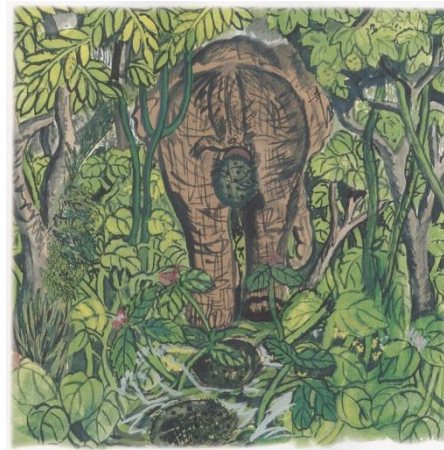
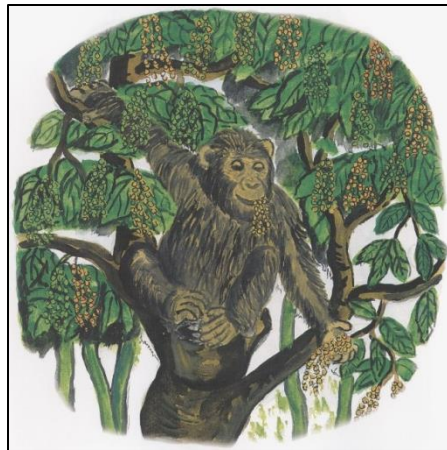


Selection Process of the Conservation Approach: Reasonability, Possibility and Justification

Goals	Program Options			
	ICCAs*	Landscape Approach	New PA (NP, NR)	Certification (REDD)
Biodiversity Conservation	Excellent (5)	Excellent (5)	Excellent (5)	Excellent (5)
Poverty reduction	Excellent (5)	Very good (4)	Very good (4)	Good (3)
Gorilla conservation	Excellent (5)	Excellent (5)	Very good (4)	Fair (2)
Efficiency	Very good (4)	Excellent (5)	Poor (1)	Poor (1)
Overall Score	Very Good 4.75/5	Very Good 4.75/5	Good 3.5/5	Fair 2.75/5

**ICCA: Indigenous Peoples' and Local Community Conserved Areas*







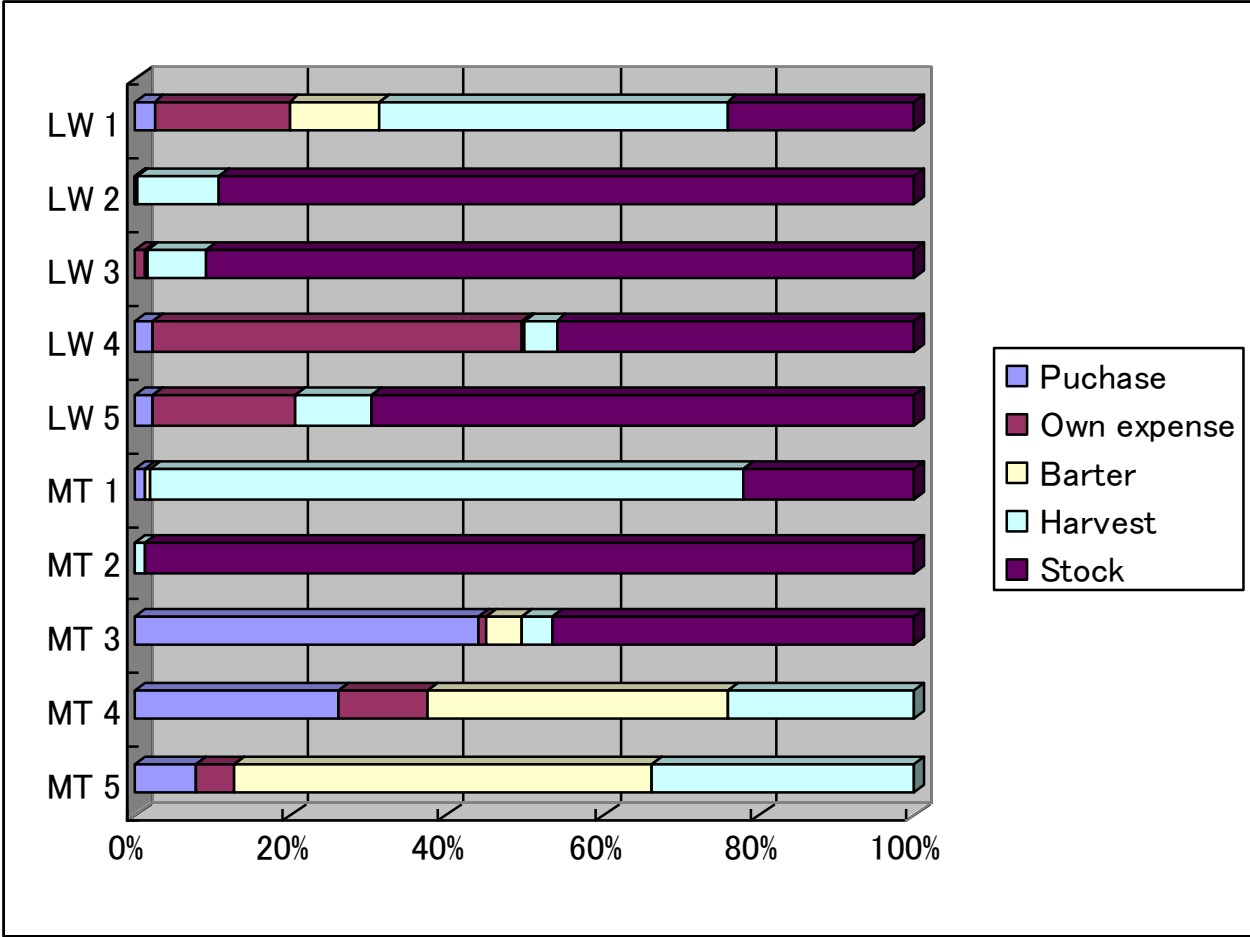


Household multidimensional poverty score: calculated using household-level indicators in six areas: demography, education, housing, health, and food/economic security).

Consumption of animal protein at KBNP

Family	Total amount (kg)		Amount /ind/day (g)	
	Meat	Fish	Meat	Fish
LW 1	72.3	80.6	23.6	26.3
LW 2	278.4	129.5	72.9	33.9
LW 3	134.6	118.8	29.2	25.8
LW 4	73.5	94.4	17.5	22.5
LW 5	52.0	146.5	10.4	29.3
MT 1	55.5	68.5	31.4	38.7
MT 2	56.7	70.7	29.6	36.9
Mt 3	87.5	89.9	33.2	34.1
Mt 4	49.5	79.0	18.5	29.6
Mt 5	128	197	27.0	41.5
Average	98.8	107.5	29.3	31.9

Methods of wood acquisition



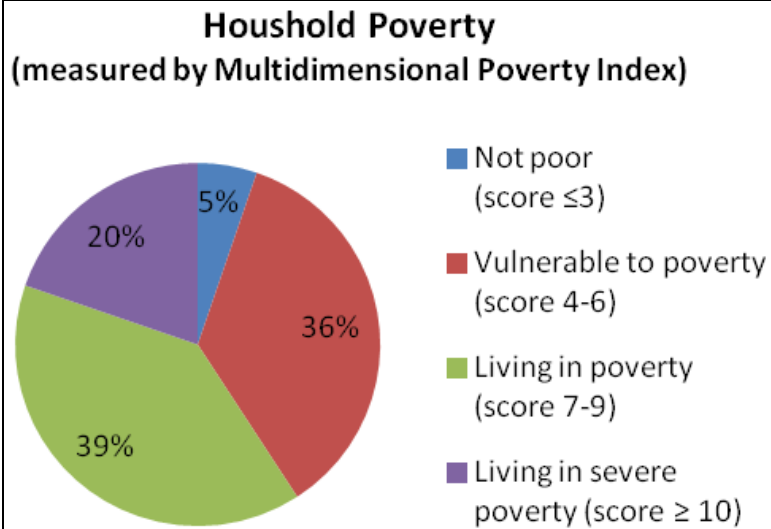
Health and education

Global child mortality: 23 %

n = 831

56% of households have one or more school-age children who are not enrolled in school

n = 634





Strong Roots Strategic Plan

(Next 5 years)

- 1. The Grauer's gorilla habitat connectivity is increased**
- 2. Anthropogenic pressures (deforestation) on the landscape's forests: Kahuzi-Biega National Park, Itombwe Nature Reserve and the 7 Community Forests are reduced**
- 3. The availability of scientific data for Community Forests in Eastern DRC is increased: Two PhD and at least 2 scientific papers per year are published**
- 4. The corridor conservation and management plan is set, adopted and implemented under supervision of the Conservation Community Committee**
- 5. An updated monitoring and evaluation framework for high level indicators is created**



Thank you