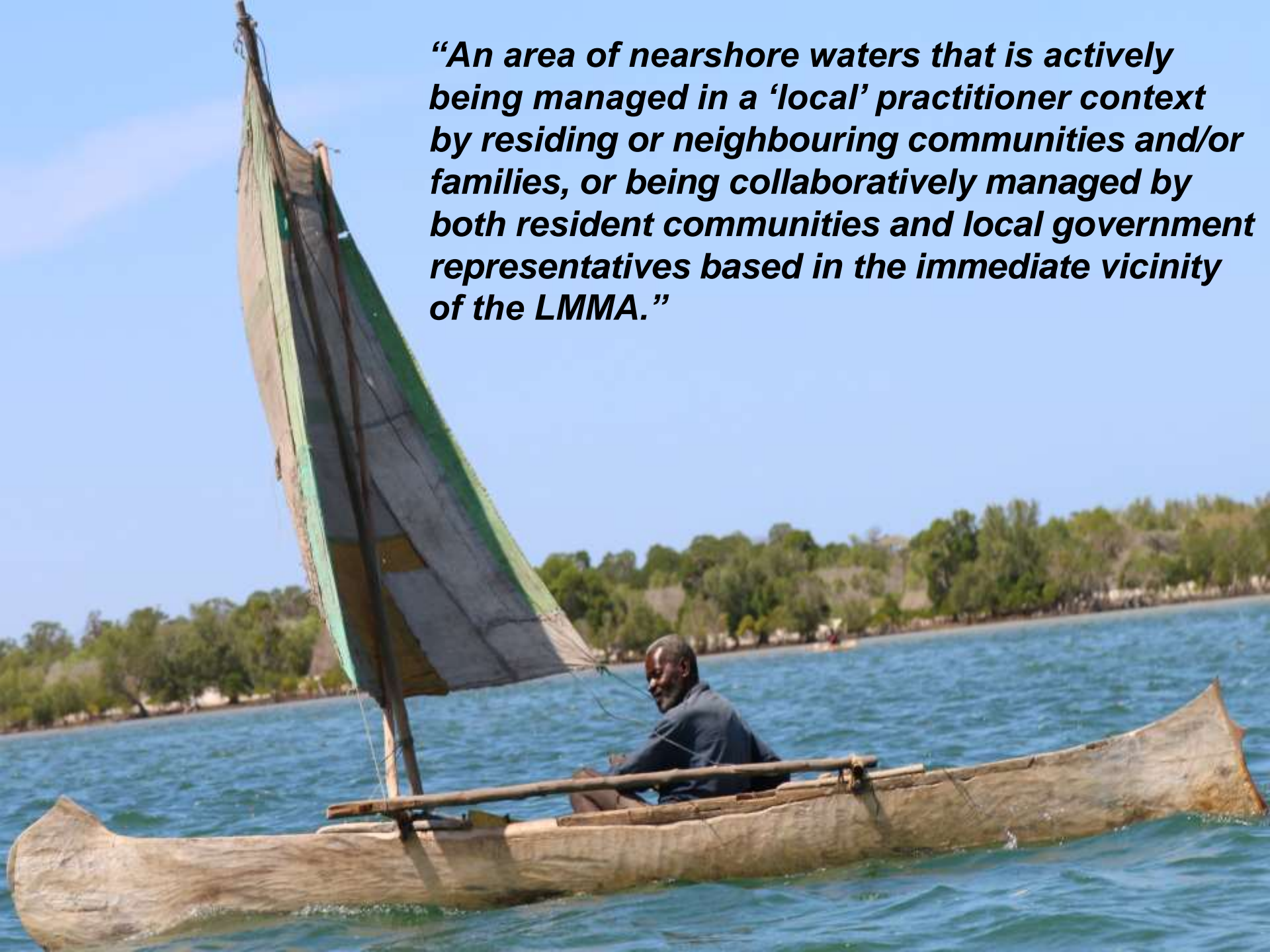




***MIHARI: NETWORKING COASTAL COMMUNITIES TO
MANAGE MADAGASCAR'S SMALL-SCALE FISHERIES
SUSTAINABLY***

“An area of nearshore waters that is actively being managed in a ‘local’ practitioner context by residing or neighbouring communities and/or families, or being collaboratively managed by both resident communities and local government representatives based in the immediate vicinity of the LMMA.”

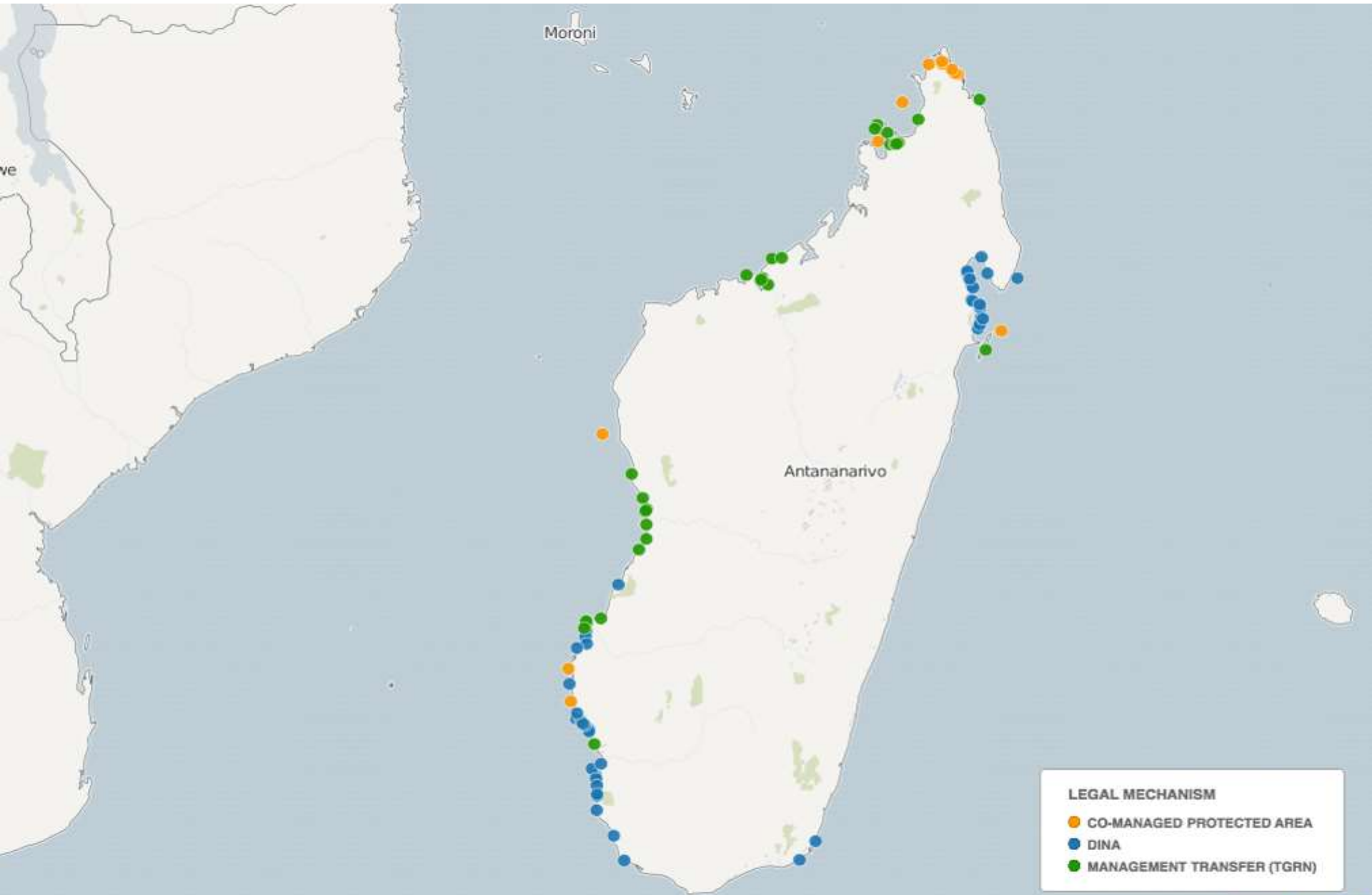


LMMA IN MADAGASCAR

- **2006:** 1st LMMA
- **14,000 km²+** under local management
- **80+** LMMA



LMMA GOVERNANCE MECHANISMS



ISOLATION



- **200+** discrete management associations
- **23** organization members



- Sharing best practices
- Making fishers' voices heard
- Building local leadership
- Securing financial sustainability

MIHARI's 3 STRATEGIES PILLARS



OPERATIONS

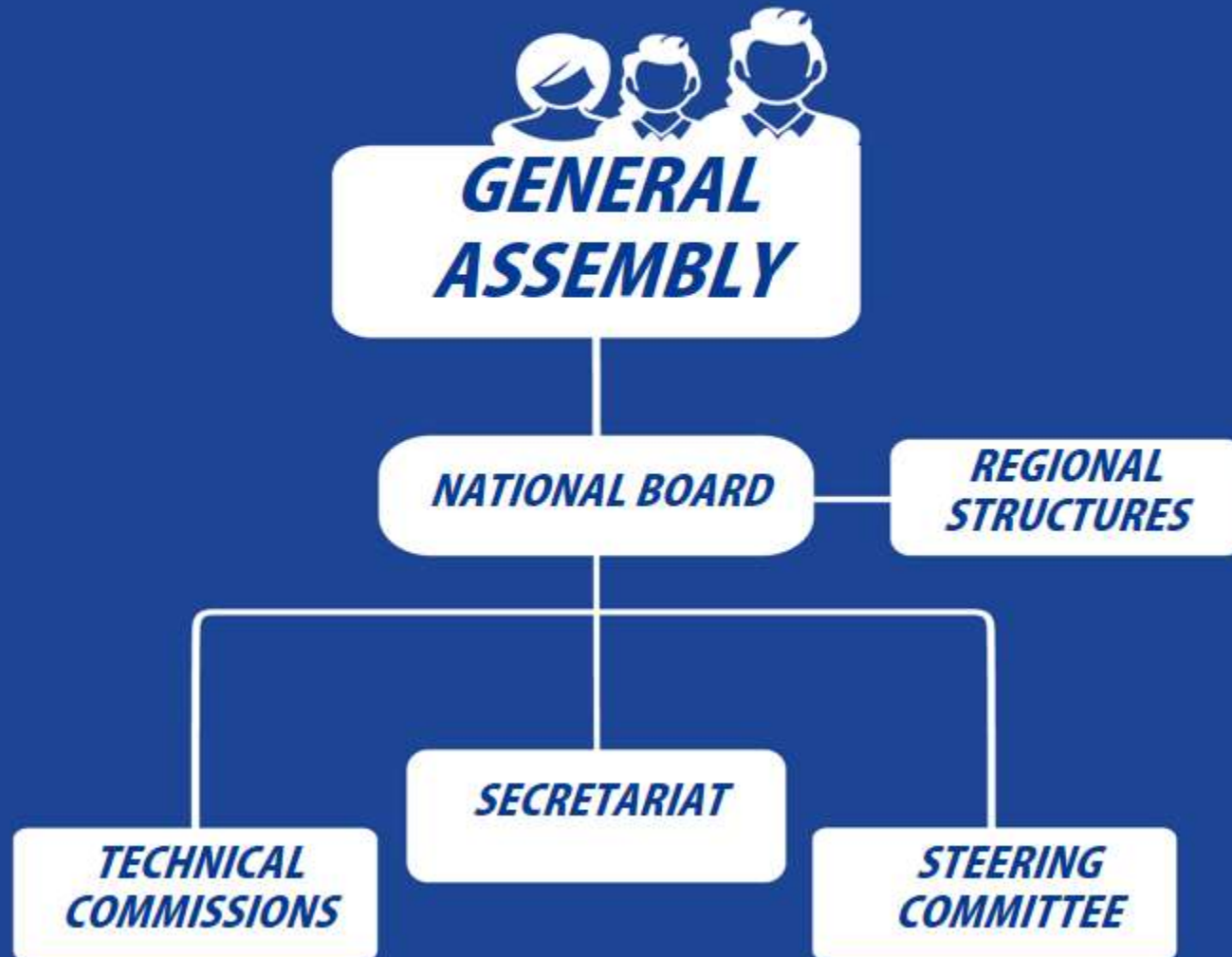


LMMA SUPPORT



**REPRESENTATION
AND ADVOCACY**

MIHARI NETWORK STRUCTURE



MIHARI's WAYS OF NETWORKING

- ✓ National forums
- ✓ Regional community workshops
- ✓ Exchange visits
- ✓ Training of LMMA Leaders



MIHARI – SOCIAL MOVEMENT

Motion 1 – Formalization and implementation of dina in natural resource management

Motion 2 – Regulation of fishing gear

Motion 3 - Creation of an exclusive fishing zone for small-scale fishers on the coastal strip



NEX STEPS

- To establish a formal structure for MIHARI
- To establish a specific legal framework for LMMA
- To expand the network's members
- To engage with the LMMA movement worldwide
- To develop monitoring tools for LMMAs and the MIHARI Network
- To explore options to secure the financial sustainability of LMMA
- To increase the visibility of the Network
- To provide trainings to LMMA Leaders



CHALLENGES AND LESSONS LEARNED



**MISAOTRA!
THANK YOU**



vatosoa@mihari-network.org
www.mihari-network.org