

Protecting Grauer's Gorilla Habitat through Community Conservation Areas



**THE DIAN FOSSEY
GORILLA FUND®
INTERNATIONAL**
Helping people. Saving gorillas. gorillafund.org

Sarah Tolbert
28 May 2018

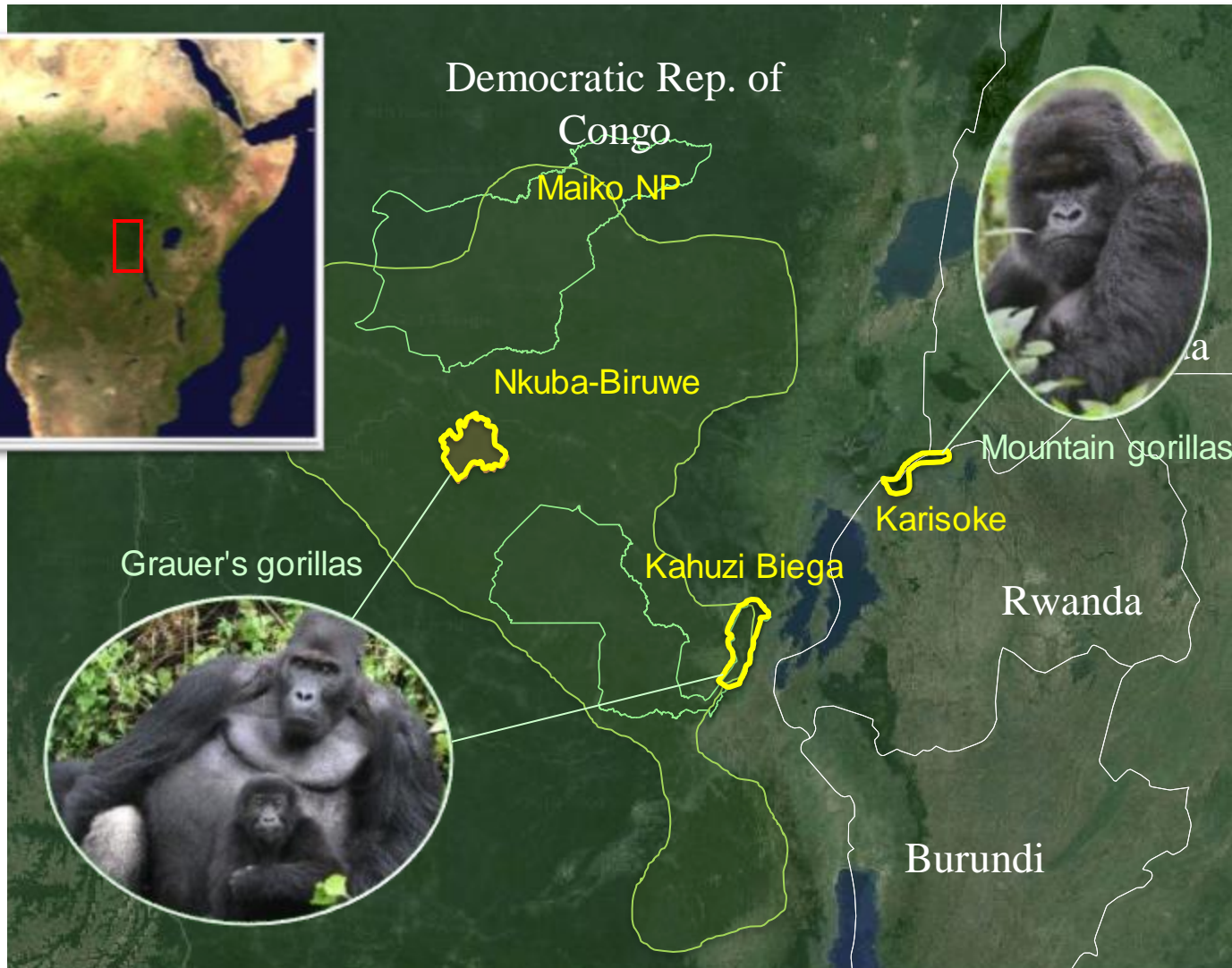


Community Conservation
Research Network





Where We Work





Main Threats

- Mining and oil exploration
=> bushmeat hunting
- Insecurity and civil wars
- Habitat fragmentation and deforestation
- Lack of capacity and resources to manage protected areas.
- Focus by international NGOs on protected areas
 - Majority of Grauer's habitat found outside of protected areas.





National and Local Context

- Community Forestry Law (2014 & 2016)
 - First time communities can apply for land tenure.
 - 15,000 ha is the maximum land size.
 - Is it strong enough to resist mining demands?
- Land Tenure in North Kivu- DRC
 - Clan or Family based.
 - Led by chiefs- family/clan member elected to represent. clan in meetings and representative to governments and ngos.



Intense hunting pressure





Additional Challenges





Permanent Base





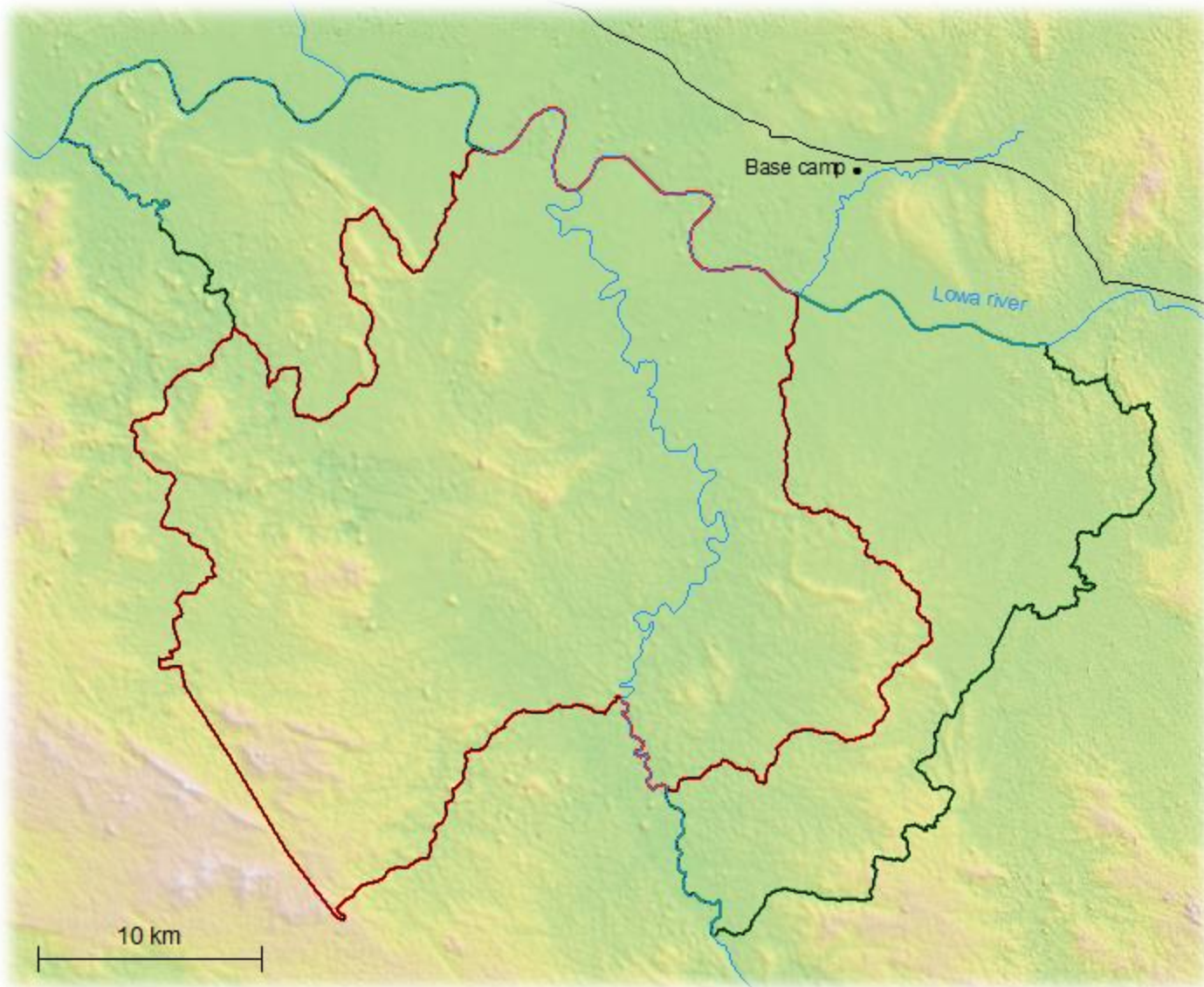
Community Engagement

Conservation based on local governance traditions





Nkuba Conservation Area



700 sq. km
to 1,100 sq.
km



Local Development

- Activities have focused on:
 - Addressing food security/protein needs
 - Teaching farming practices/assisting with crop diversification
 - Small animal distribution
 - Model farm on our base
 - Education
 - Community leaders outreach
 - Paying school fees of landowners' children (200 children)
 - Introducing nature clubs/school education programs
 - Health Care
 - Health center rehabilitation



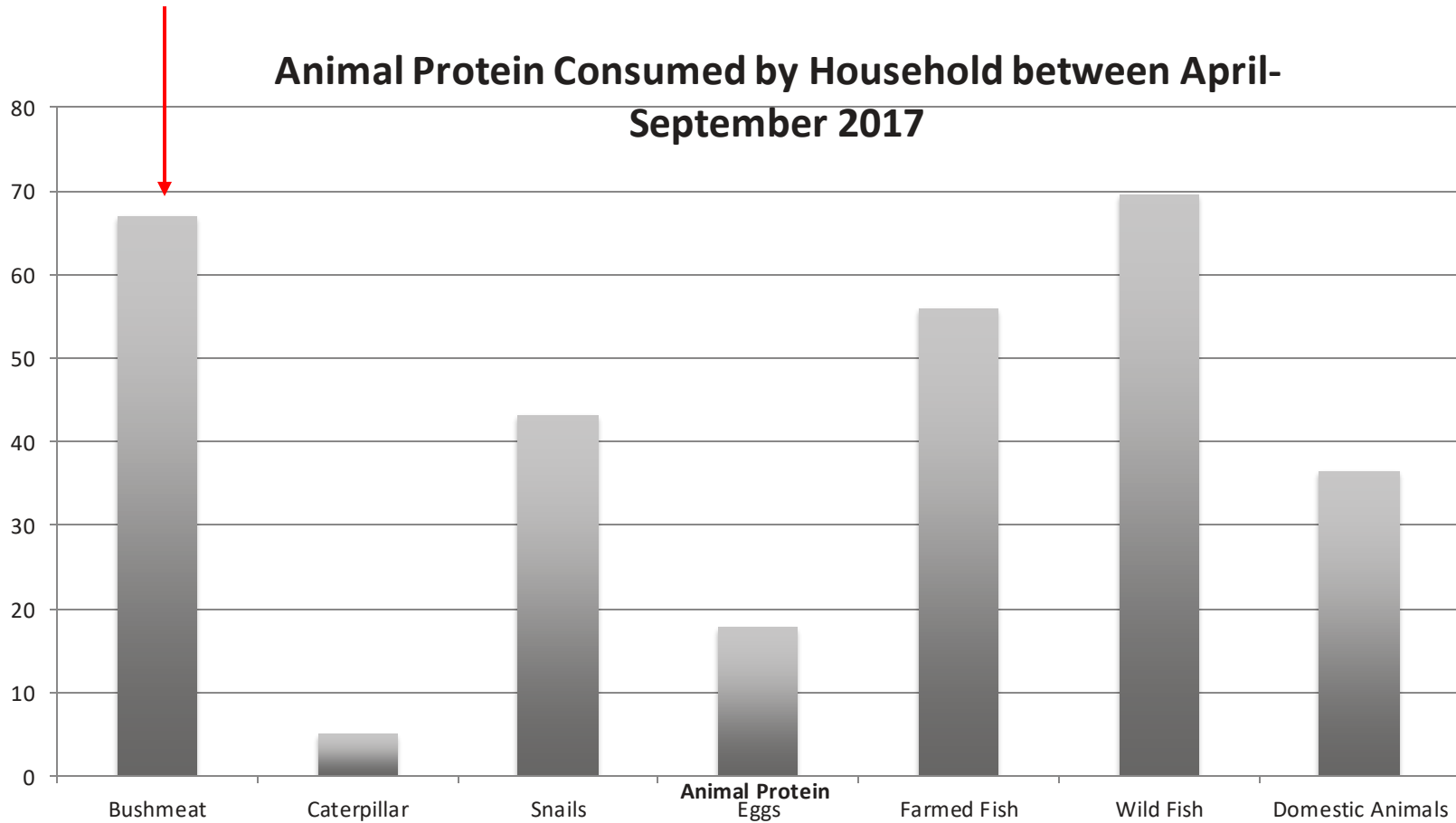
Bushmeat Surveys

- Objectives:
 - Monitor the trend in bushmeat hunting and consumption in Nkuba
 - Improve understanding of food security and nutrition in Nkuba Baseline data to monitor impact of our projects
- Methods
 - Survey between 25-32 households from 3 villages every months
 - Collect data on:
 - nutrition, food security, bushmeat consumption, bushmeat hunting (species, techniques), where bushmeat is purchased and sold, price, human well-being etc.



Bushmeat Surveys

Animal Protein Consumed by Household between April-September 2017

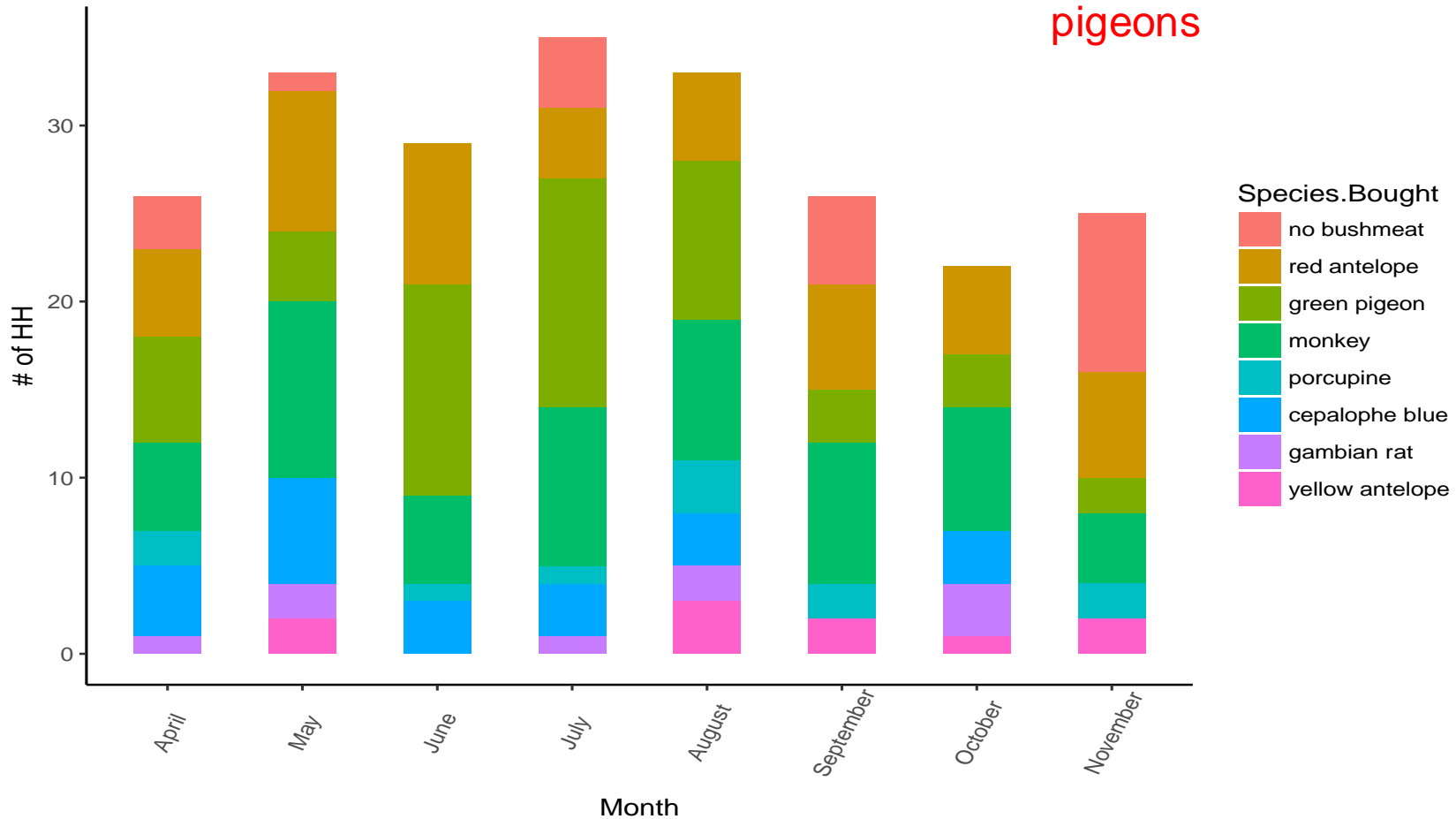




Bushmeat Surveys

Two most affected taxa are monkeys and green pigeons

Bushmeat Consumption in Nkuba
Species consumed by household





Bushmeat Surveys





First Ape Killing in Nkuba

Community launched an operation to withdraw firearms from NCA





First Ape Killing in Nkuba

We helped support lawsuit in Walikale court against great ape poachers in NCA





First Ape Killing in Nkuba

Letter from landowners against use of firearms inside NCA forest

République Démocratique du Congo
 ETAT-MAGASIN
 SECTEUR DE WAPAMBA
 GROUPEMENT WASSA
 LOCALITE BAHIL
 COMMUNALE - ILI...
 Nkuba, le 08 Mars 2018

Vu pour...
 Vu pour...
 Vu pour...
 Vu pour...

Transmis copie pour information

- Monsieur le chef de secteur de Wamanga ;
- Monsieur le chef d'antenne territorial de l'ANR ;
- Monsieur le commandant territorial de la PNC ;
- Monsieur le chef de service de l'environnement, Conservation de la Nature et tourisme, Tous à Walikale ;
- Monsieur le chef de groupement de Wassa ;
- Monsieur le Commandant I/ADOC de la BAWA ;
- Monsieur le Commandant de la PNL en place ;
- Monsieur le chef d'antenne de l'ANR Biruwe ;
- Monsieur le chef d'antenne de l'environnement, Tous à Biruwe ;
- Monsieur le chef de secteur de Bakano à Itbero ;
- Monsieur le chef de groupement de Bakanda à Ibangi ;
- Monsieur le Directeur de programme de la Dian Fossey Gorilla Fund International à Goma ;
- Monsieur le chef de localité de Bente à Nkuba ;
- Monsieur le chef de localité Balamba à Makana ;
- Monsieur le chef de localité Bangandula à Mabela.

Administrateur de territoire de Walikale
 [Signature]

Objet : Règlementation de la chasse dans nos concessions forestières

[Stamps and signatures]

Ainsi donc, nous demandons aux autorités administratives, autorités coutumières, autorités militaires, autorités policières, autorités de renseignement et de l'immigration, les services techniques compétents aussi bien que la société civile de pouvoir apporter tout appui nécessaires aux prescrits dudit document et que tout celui qui en outrepassera subisse la force et la rigueur de la loi.

Veuillez agréer, Monsieur l'Administrateur du territoire, l'expression de nos sentiments civiques et patriotiques.

Pour le don :

- 1) Can BAYUGU, terrien
- 2) Can BAKUMBI, terrien *Bumani - Moli zha*
- 3) Can BANAKISUBA, terrien *TAIBU - KANUKAYE*
- 4) Can BASUKWAMANENO, terrien *NYONGO ISAJA*
- 5) Can LDUMBA, terrien *MAMENYO - ABEGENDO*
- 6) Can MUUMA, terrien *MUSA - KUDIGE ISIBILIA*
- 7) Can BASUKWA MTETA, terrien *Kungu - Denis - Kayani*
- 8) Can DIEMBE, terrien *MASUTRA - YOUNG GASY*
- 9) Can BANAKEBOA, terrien *Sika Pika Ubi Kanki*
- 10) Can ANGAFANA/NGOMO, terrien *LAVIE-SAMBONGO*
- 11) Can ARAMINGA, terrien *ARAMINGA - BAHIMENGO*



Lessons Learned

- Community Work requires longer term investment.
 - Impact that donors want to see takes time.
 - Choose your partners well.
- Meetings, meetings, meetings
 - But ultimate decision making power should stay with local leaders.
- Tailor projects to local social and political context.
- Ongoing monitoring of intended project results help you catch unintended outcomes.
 - Baseline data is crucial



Thank You!

Sarah.A.Tolbert@gmail.com





The last entry in Dian Fossey's diary reads:

"When you realize the value of life, you dwell less on what is past and concentrate more on preservation of the future."



**THE DIAN FOSSEY
GORILLA FUND[®]
INTERNATIONAL**

Keep up with what we do!

www.gorillafund.org

Follow us on

