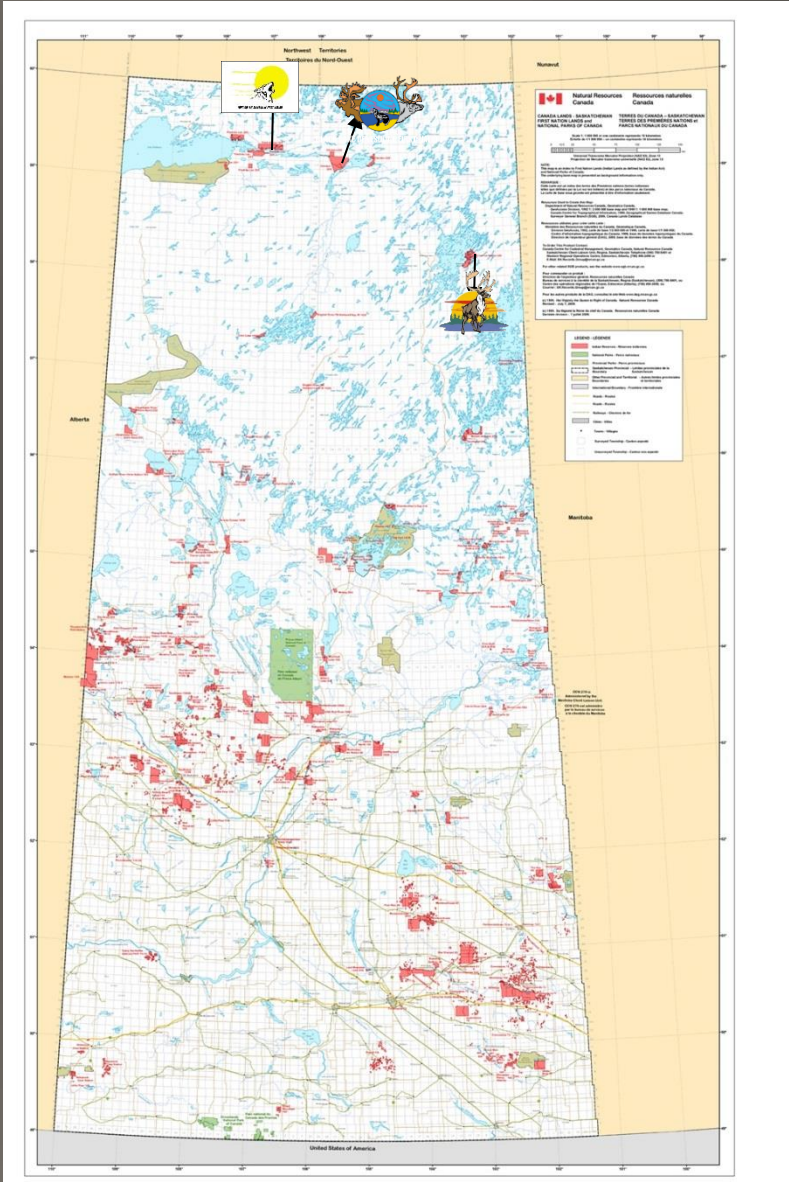
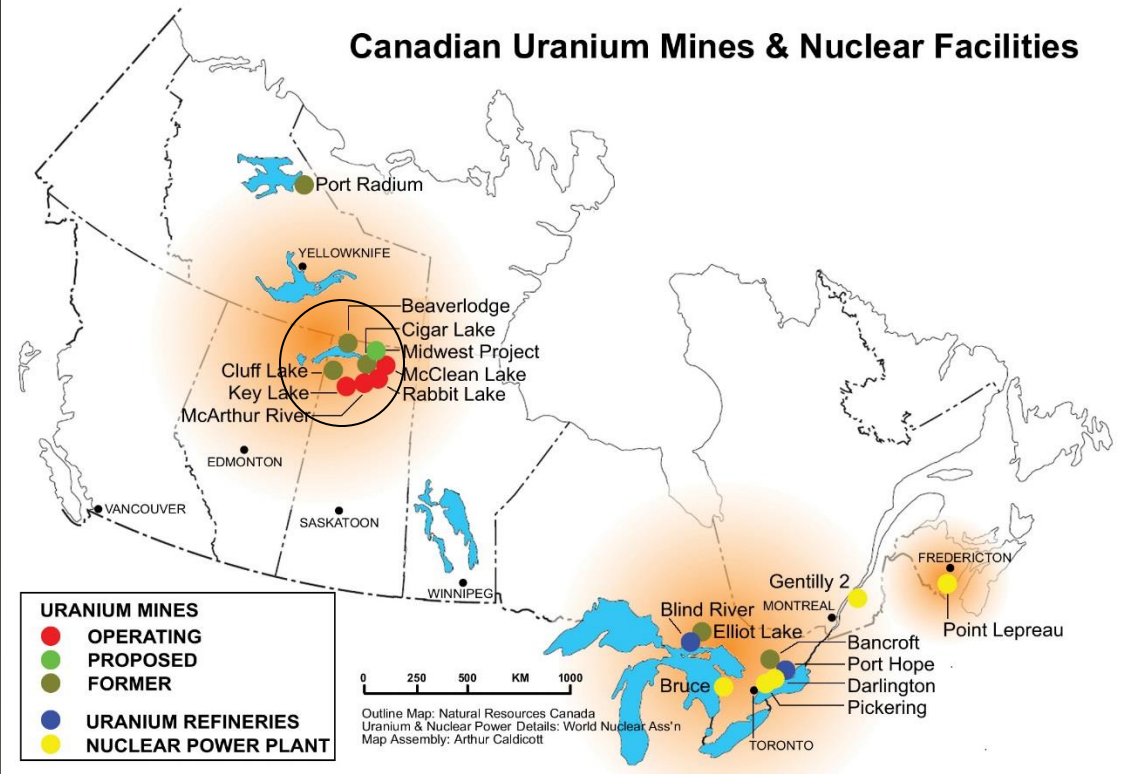


Protecting Water Through Traditional Knowledge - Land use planning in the Athabasca Basin

Laura Gaitan
Department of Geography
Memorial University of Newfoundland



THE ATHABASCA BASIN Northern Saskatchewan



Saskatchewan Provincial Base Map
Native Lands Reserves

RESEARCH OBJECTIVES

Collect traditional land use & occupancy information from Elder interviews in order to:

1. Identify landscapes of cultural importance to the Denesuline Communities;
2. Understand changes in the water quality, quantity and flow of the Basin.

The knowledge gathered will be included in the future Athabasca Land Use Plan; and specifically used to help identify core areas in need of protection and conservation.



METHODOLOGY

The interviews followed a semi-structured format using a standardized interview guide designed to provide a consistent, but flexible, framework for soliciting and recording responses. Map data was captured and managed using a direct-to-digital process involving mapping on-screen, with Google Earth imagery as a digital base and geo-referenced at a 1:50,000 scale or better.



Community training session, Fond du Lac FN.



Interview, Black Lake FN.



Interview, Hatchet Lake FN.

ANALYSIS

"When [we] start thinking about the water [we] take it for granted; we probably got one cleanest water [sources] in the world, and it's not going to be like that forever, not necessarily."



"I know some people don't drink water from the lake here. Me? I don't care. If I want to drink I just take it. Yeah, it is. Since I was a kid we get water from there."





THANK YOU



Conseil de recherches
en sciences humaines
du Canada

Social Sciences and
Humanities Research
Council of Canada

Canada