



# Tracking Change Research Projects in the Gwich'in Settlement Area

Communities, Conservation, and Livelihoods Conference  
May 29, 2018

Amy Amos, GRRB Executive Director  
Tracey Proverbs, Masters Student, University of Victoria

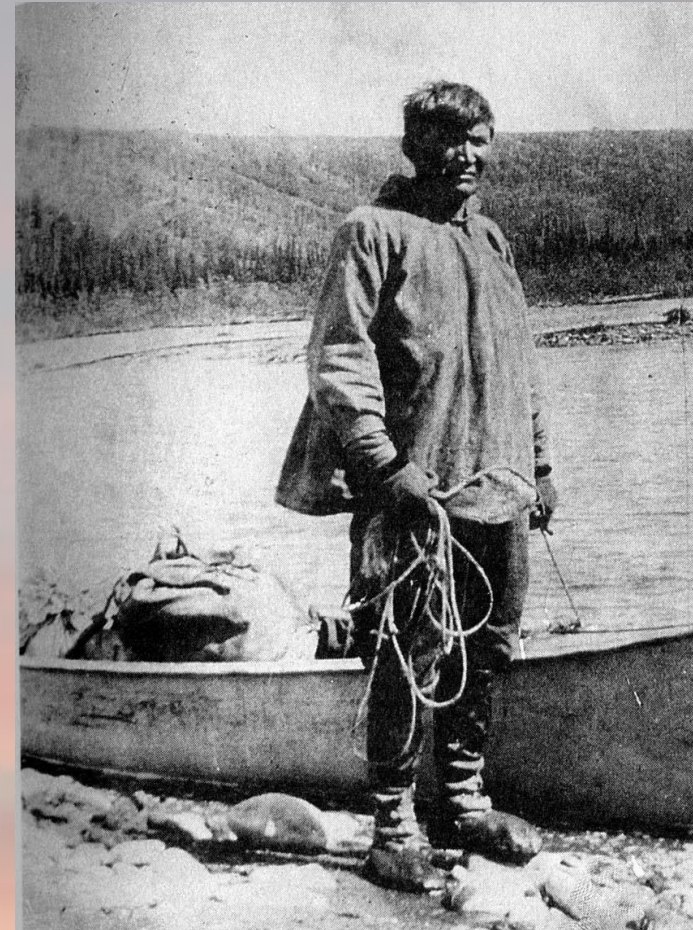
# The Gwich'in

- ▶ One of most northern indigenous peoples
- ▶ Related to Athapaskans
- ▶ NWT, Yukon & Alaska
- ▶ NWT Gwich'in
  - 4 communities
  - Population: 3,440
- ▶ Hunt, trap, fish



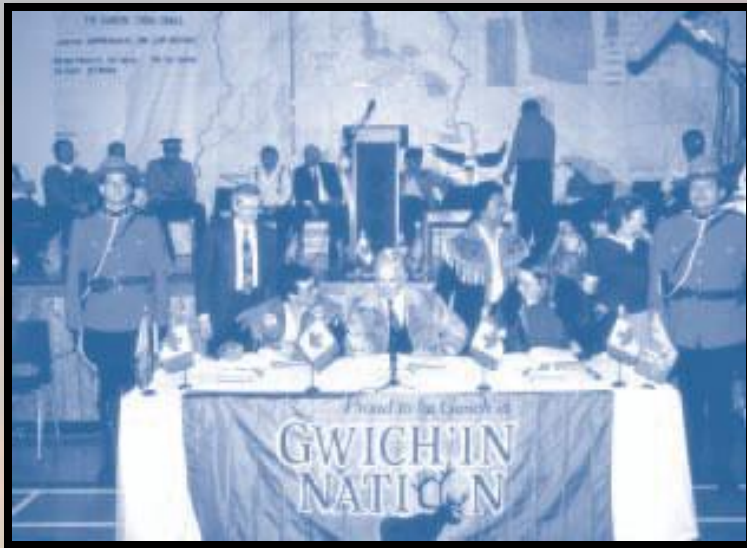
# Traditional Management

*“The Gwich’in are natural conservationists”* –  
Sterling Firth



# Land Claim

The Gwich'in Comprehensive Land claim Agreement was settled in 1992



# Gwich'in Renewable Resources Board

*Mandate: To be the main instrument of wildlife, fish and forest management in the Gwich'in Settlement Area*



# Who am I?



Photos: L – Kiyo Campbell, R – Emma Hodgson

# Change in the north

- ▶ Rapid, regional ecological change
  - Climate change + development projects
- ▶ Occurring in landscapes that are cultural as well as ecological



Photos: L & Mid – Tracey Proverbs, R top – J.P.L. Loovers, GSCI. 2007, R bottom – Archives/myyellowknifenow.com

# Project 1:

What are current impacts of environmental disturbances in the Gwich'in cultural landscape?

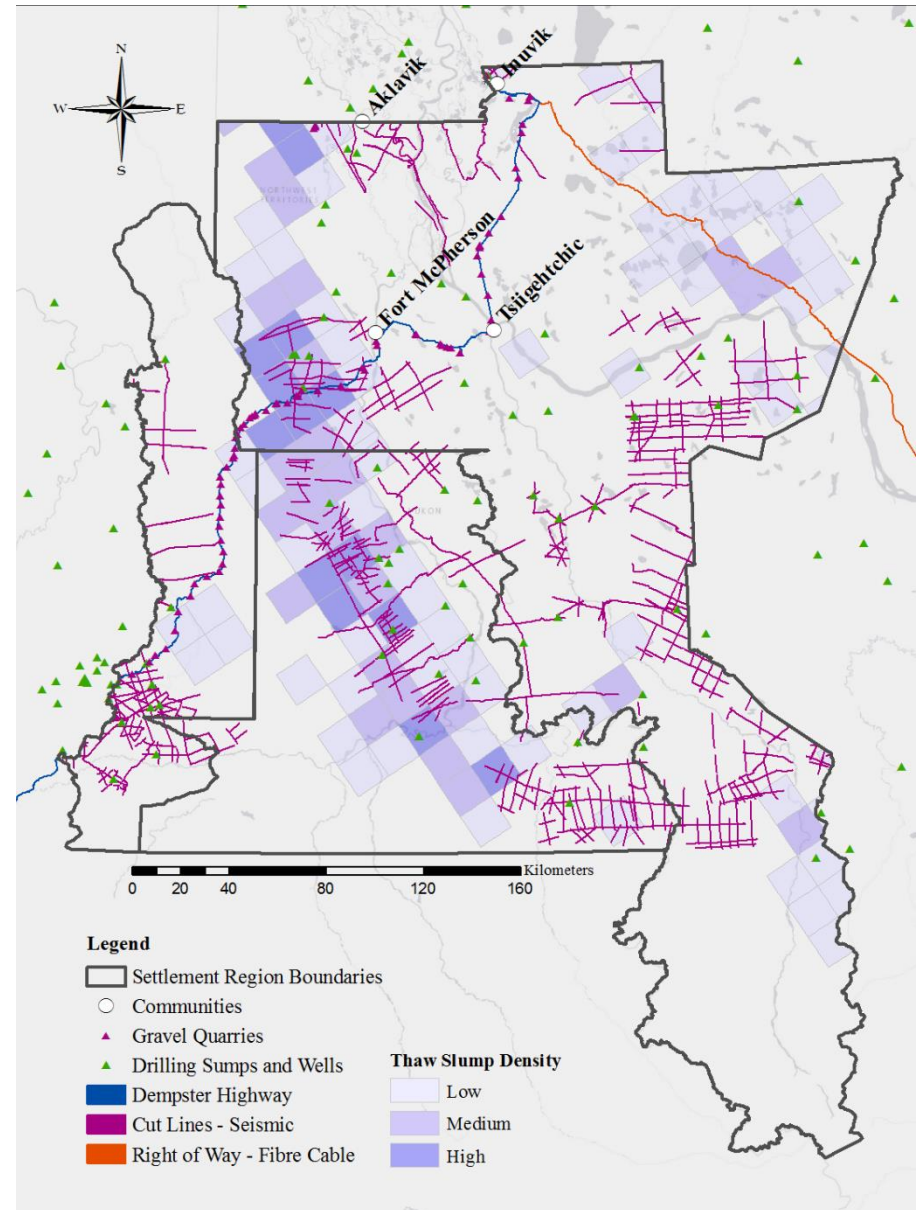


Photos: L - R: Ledcor Group Project Profile; Peel Fish Camps 2018 Participants; Trevor Lantz; Tracey Proverbs



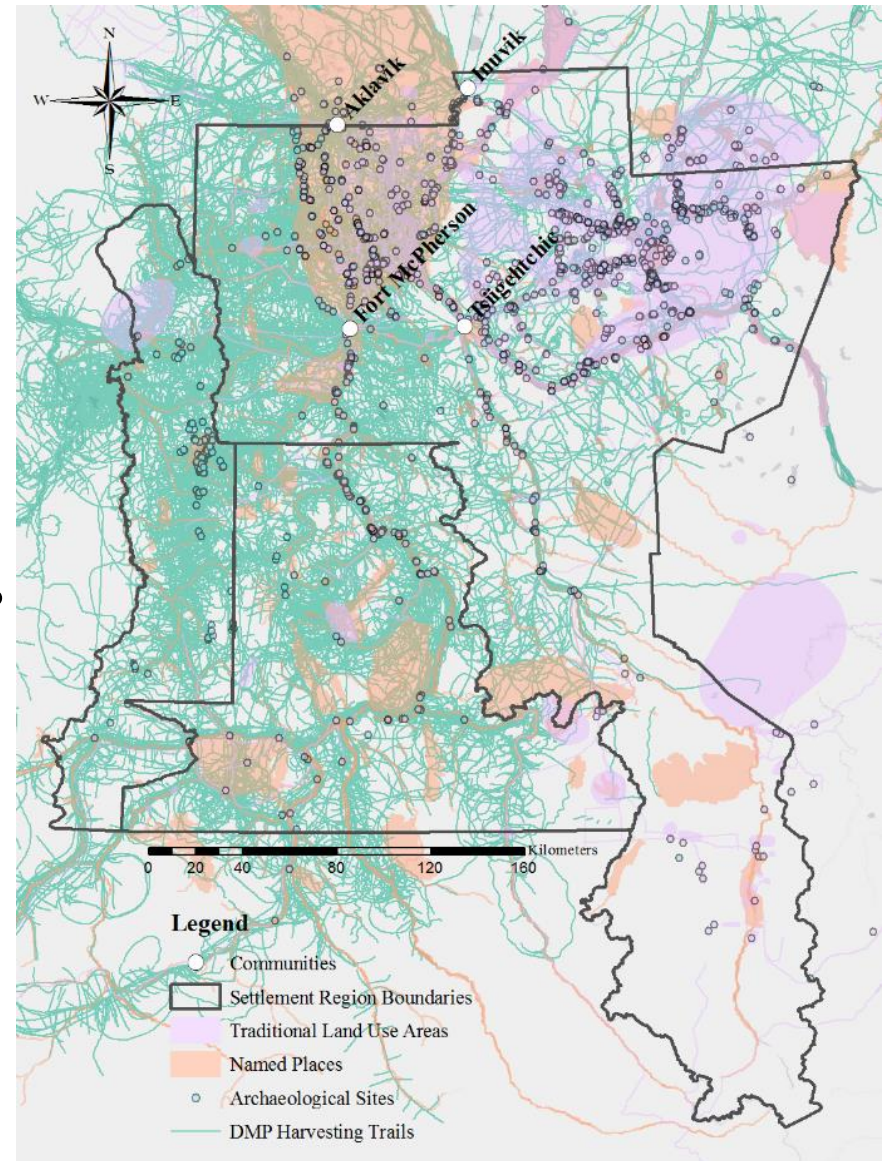
# Environmental Disturbances in the GSR

1. Highways
2. Right of way/fibre optic cable
3. Cut lines
4. Drilling sumps & wells
5. Community footprints
6. Gravel quarries
7. Permafrost thaw disturbances

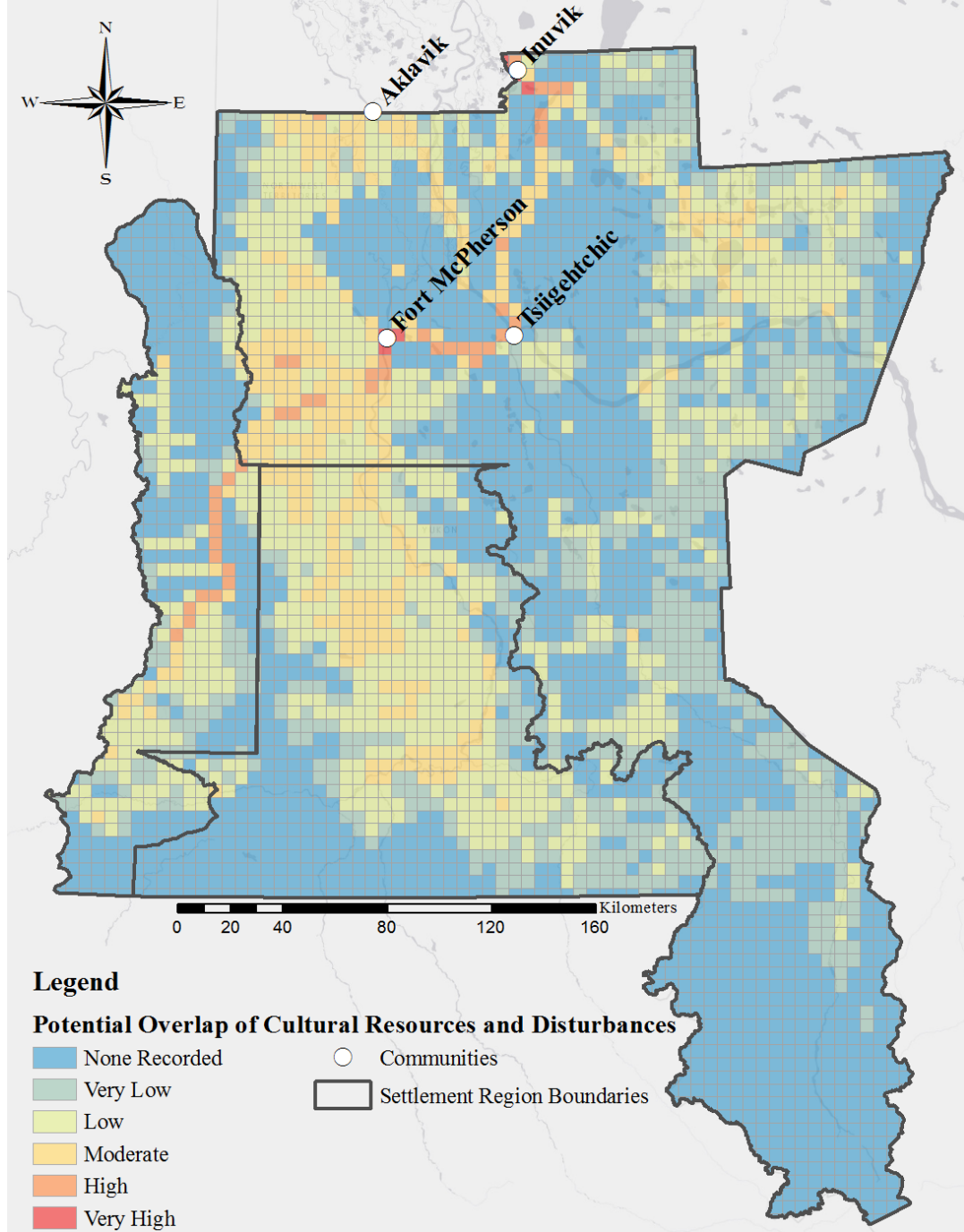


# Cultural Resources in the GSR

1. Named Places
2. Traditional Land Use Areas
3. Archaeological Sites
4. Harvesting Trails (Dene Mapping Project)



# Total Overlap Map



# Interviews – February 2018

- ▶ Amy Amos, Tom Andrews, Ingrid Kritsch, Sharon Snowshoe
- ▶ Ideas, feedback, discussion

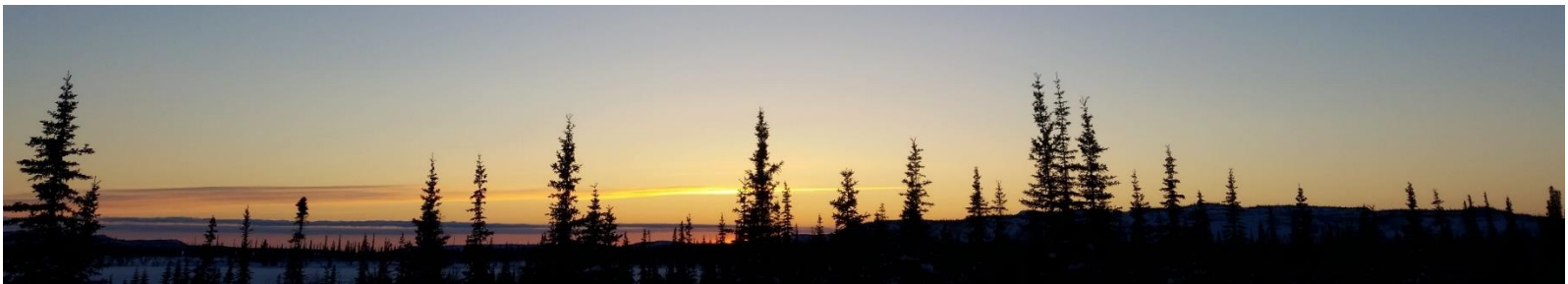


Photo: Tracey Proverbs

# Secondary analyses

- ▶ Many ideas for additional analyses
- ▶ Ongoing: Fish specific cultural resources



Photos: L – Peel fish camps 2017 participants; Mid – NWT Archives/[myyellowknifenow.com](http://myyellowknifenow.com); R – Chanda Turner

# Project 2:

## How does access to fish affect Gwich'in well-being?



Photos: L & R – Tsiigehtchic camp 2016 participants; Middle: Chanda Turner

# 2017 Field Season

- ▶ 26 interviews
  - focus on personal fishing history, access to fish and fishing, and observations of environmental change
- ▶ Visits to 4 fish camps
- ▶ Employed 6 youth at fish camps
- ▶ Collaboration with multiple organizations



Photos: L – Rayna Vittrekwa; Middle – Kiyo Campbell; R – Peel fish camps 2017 participants

# Data Creation

~~Transcription~~ → ~~Coding~~ → Analysis



# THEMES



Access

Environmental  
Change

Well-  
being

# Project 3

- ▶ Community based whitefish monitoring
- ▶ Led by Emma Hodgson (SFU) and Rachel Hovel (UMF)

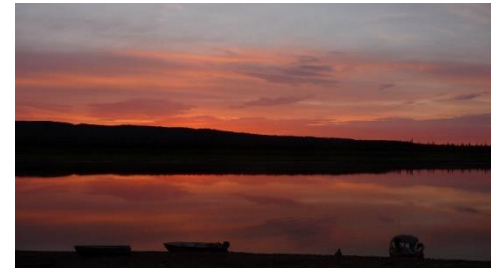


Photos: Peel Fish Camps 2017  
Participants



# Significance of this work

- ▶ Tools for...
  - Cumulative impacts and effects research
  - Local, regional, and global areas experiencing layers of change
  - Cultural and natural resource managers
  - Community members



Photos: Top – Tracey Proverbs; Mid – Chanda Turner; Bottom – Peel Fish Camps 2017 Participants

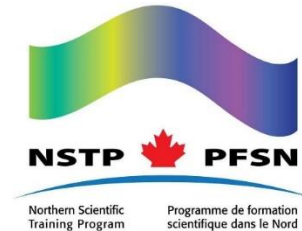
# Thank you!

Mahsi' choo to: Abe Stewart, Mary Effie Snowshoe, Alice and Ernest Vittrekwa, Wally Tyrrell, Martha Snowshoe, Sharon Snowshoe, Arlyn Charlie, Rayna Vittrekwa, Cassandra Francis, Justin Elanik, William Tyrrell, Jessi Pascal, Karen Benoit, Amy Amos, Ingrid Kritsch, Tom Andrews, Sarah Lord, Nihtat RRC, Ehdiitat RRC and band office, Gwichya RRC, Tetlit RRC, Aurora Research Institute, Gwich'in Renewable Resources Board, Gwich'in Tribal Council, Gwich'in Tribal Council Department of Cultural Heritage, Prince of Wales Northern Heritage Centre, Yukon Archaeology, Kiyo Campbell, Chanda Turner, Maliya Cassels, Emma Hodgson, Rachel Hovel, and the communities of Aklavik, Fort McPherson, Inuvik, Tsiigehtchic, and all interview participants.



University  
of Victoria

trackingchange



Gwich'in Tribal Council



Social Sciences and Humanities  
Research Council of Canada

Conseil de recherches en  
sciences humaines du Canada

Canada

We gratefully acknowledge funding from the Social Science and Humanities Research Council of Canada through the Tracking Change project, the Northern Scientific Training Program, and ArcticNet.