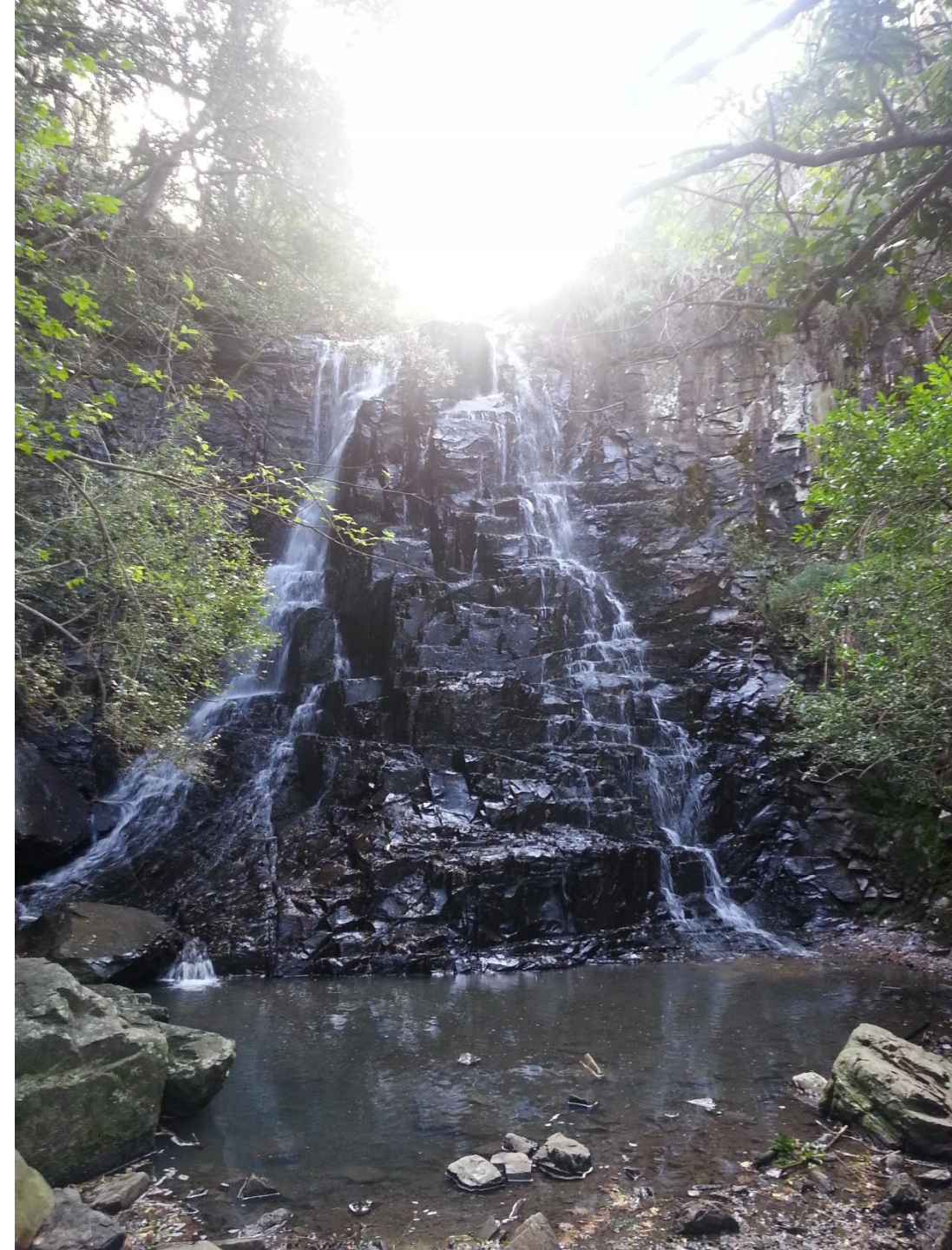


The Healthy Catchment Alliance: building inclusive eco-economies within strategic water source areas of one of the most biodiverse countries in the world

Bridget Jonker, Nkosinathi Nama, Nicholas Armstrong,
Tanya Smith, Sinegugu Zukulu, Kerry McLean



Thabo Madlala's story



© EWT



© Eric Lafforgue

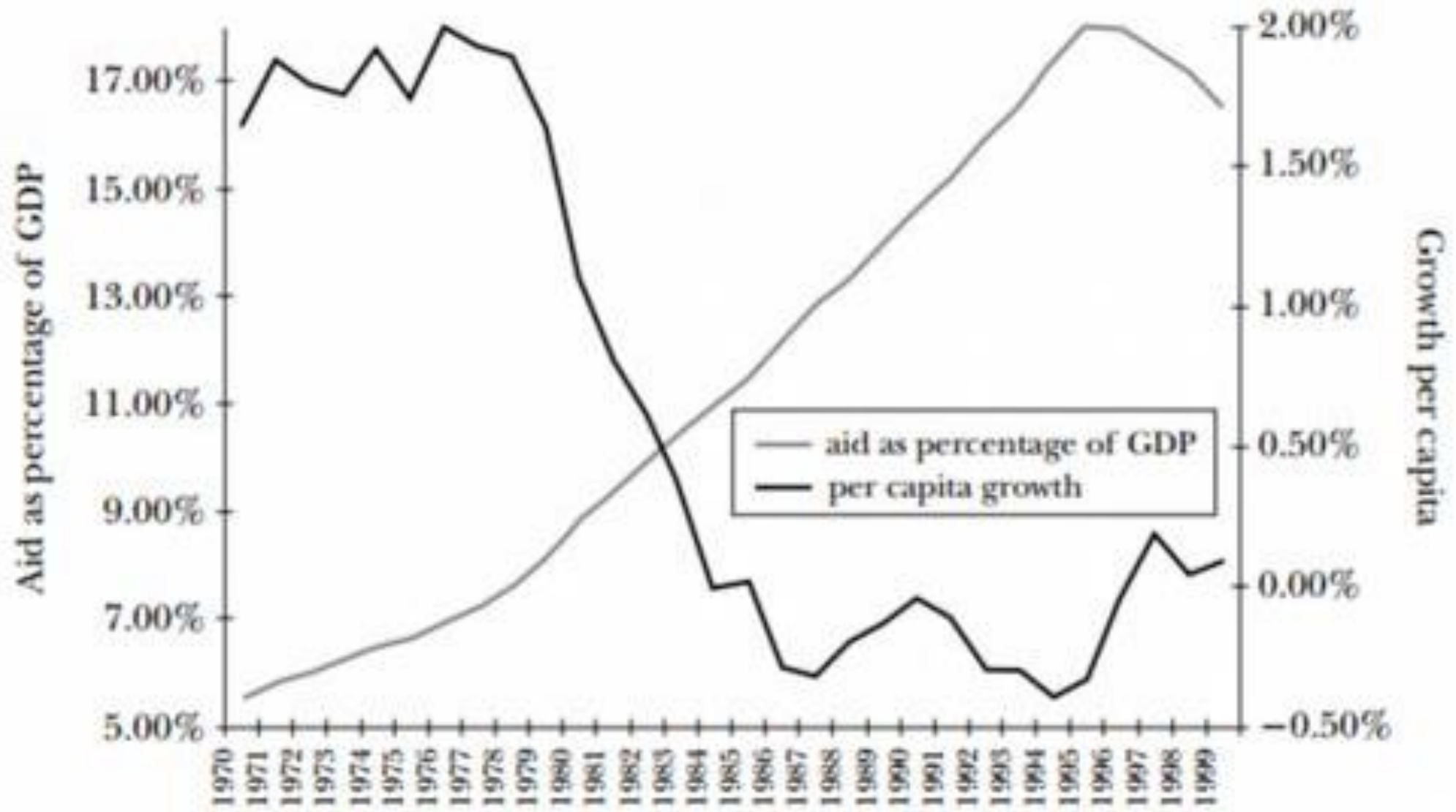


© Sheba Media



© Skyhawk Photography





The Healthy Catchment Alliance



**ENDANGERED
WILDLIFE TRUST**
Protecting forever, together.



WESSA
PEOPLE CARING FOR THE EARTH

**CONSERVATION
SOUTH AFRICA**



Member of the CI Network





Governance

Law

Conservation

Finance

Policy

Awareness

**Integrated
Programmes**

HCD

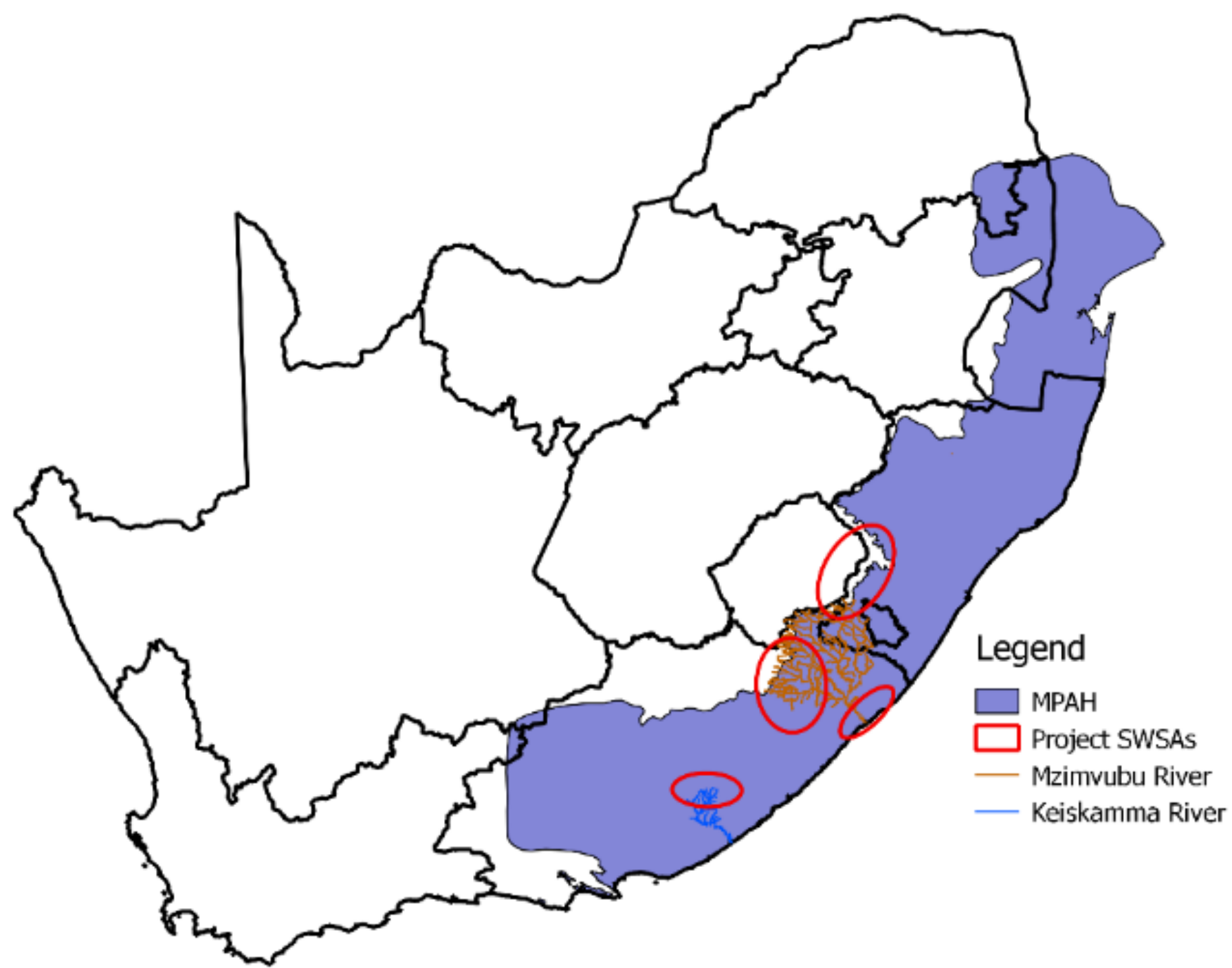
Gender violence

Livelihoods

Research

ECD

Healthcare





Conservation International
#24322921

amaXhosa
amaZulu
Basotho



6 months after initial treatment

2 years after initial treatment



2670 ha treated over the last 3 years in the two catchments

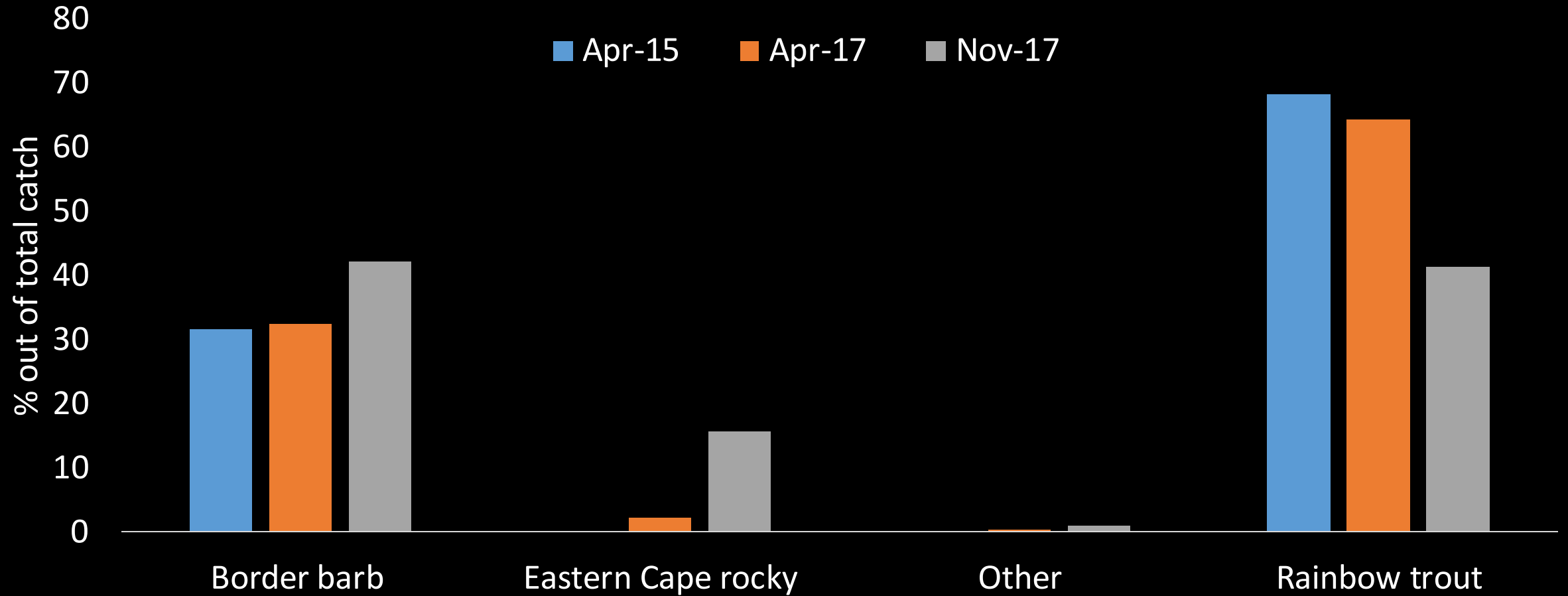


US\$ 750 000 spent on wages



250 households earned income from the project between 2015 and 2018

Changes in fish abundances between April 2015 and November 2017

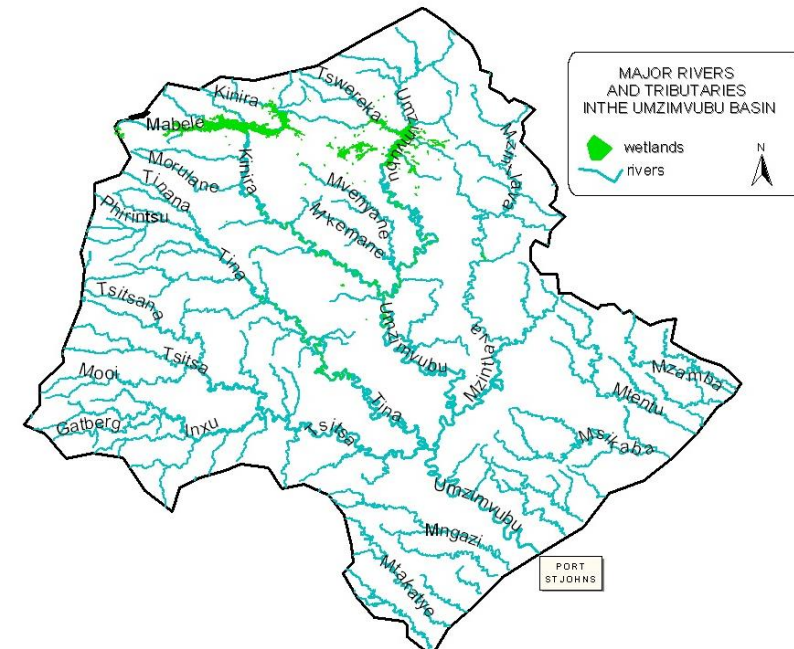
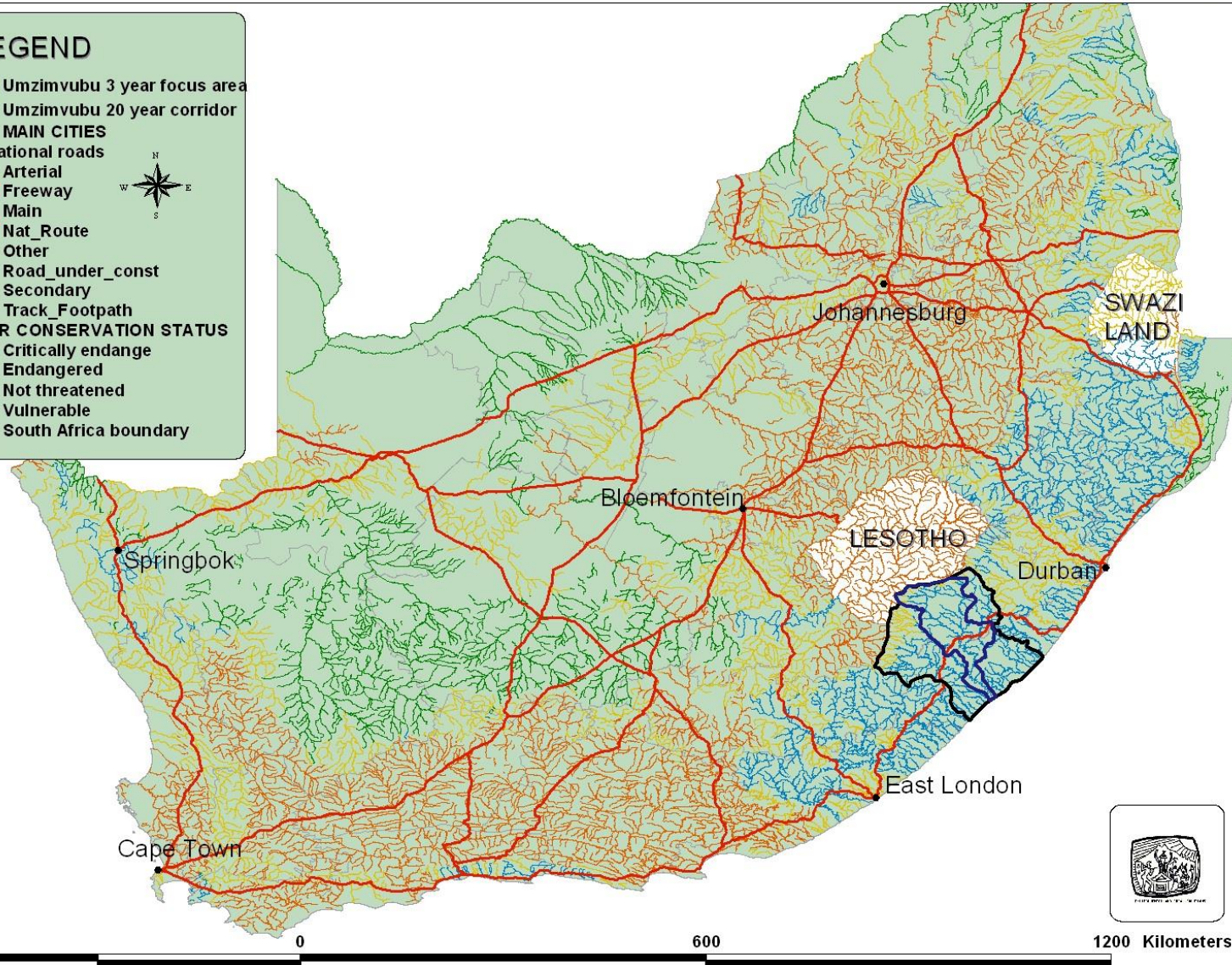


UMZIMVUBU CATCHMENT CONSERVATION CORRIDOR WITHIN RIVER CONSERVATION STATUS IN SOUTH AFRICA



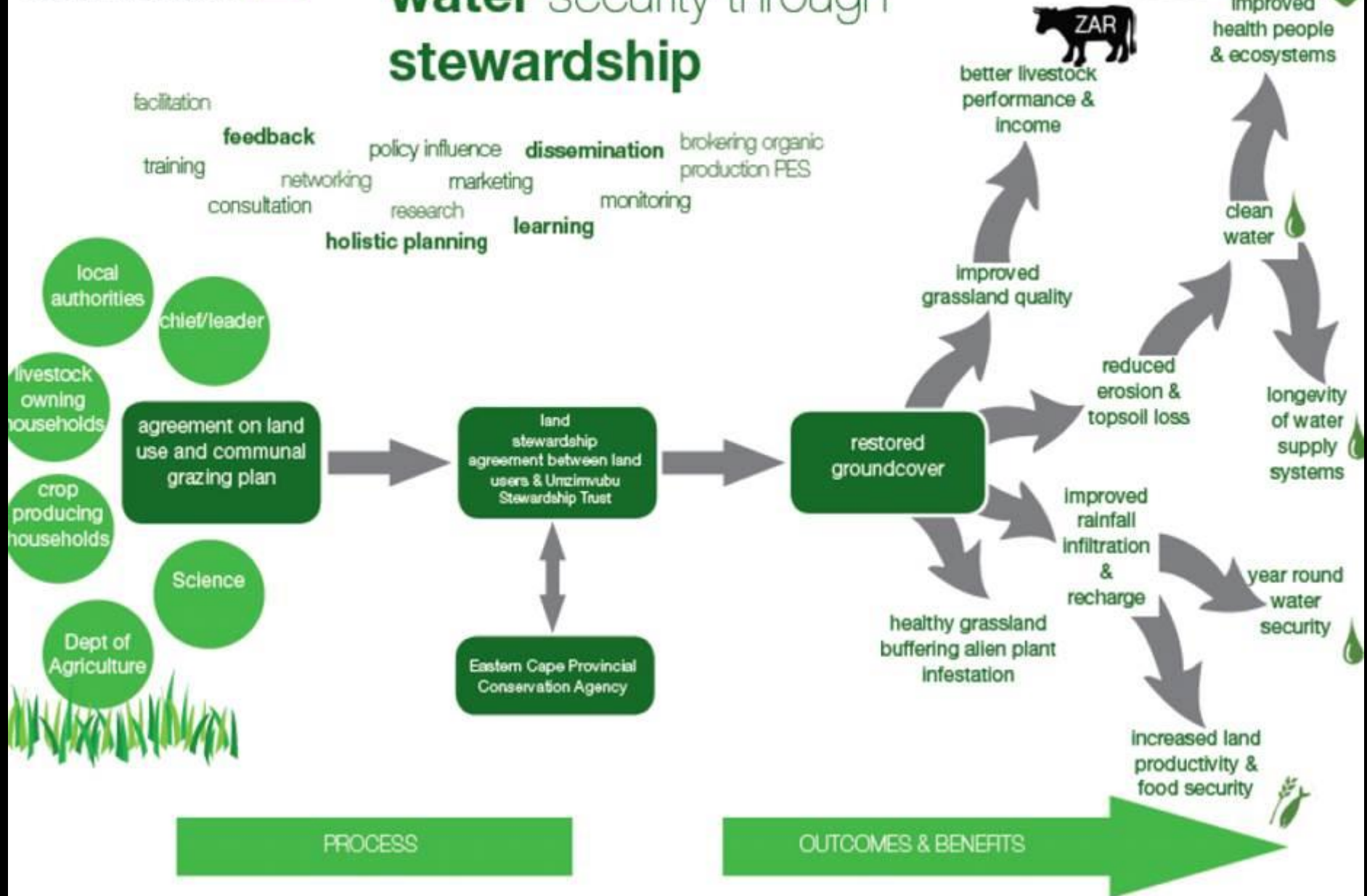
LEGEND

- Umzimvubu 3 year focus area
- Umzimvubu 20 year corridor
- MAIN CITIES
- SA national roads
 - Arterial
 - Freeway
 - Main
 - Nat_Route
 - Other
 - Road_under_const
 - Secondary
 - Track_Footpath
- RIVER CONSERVATION STATUS
 - Critically endangered
 - Endangered
 - Not threatened
 - Vulnerable
 - South Africa boundary



Upper: 435 000ha
± 1 million people
One of the last free-flowing rivers in SA

catchment restoration & water security through stewardship





- US\$ 1.2 million through livestock sales – directly to community members
- Increased infiltration and reduced run-off due to improved vegetation cover
- Grass species diversity on rangelands has increased in some places from 4 to 8 species per m³
- Livestock health and calving rates have improved substantially



Demand for honey in South Africa is estimated at 2700 to 3000 tons per annum whilst production is estimated at 1700 to 2000 tonnes per annum





- 9 villages
- 24 beekeepers trained
- 23 beekeepers still active
- Currently supplying local markets
- Conservation agreements in negotiation



16 schools across 3 catchments



WESSA

PEOPLE CARING FOR THE EARTH



Key insights from the partnership

- Communication is critical (mobile apps – GrassRoot)
- Early involvement of local community structures – work at the right scale
- Consistent extension support
- Socio-economic incentives need to be closely linked with conservation agreements – holistic approach
- Indigenous Knowledge Systems (IKS)
- Learning exchange visits to successful initiatives
- Strong and supportive enabling environment
- A quick and tangible payoff
- Political support
- Design Thinking and Systems Theory



The work of the Healthy Catchment Alliance is made possible by the following donors:



environmental affairs

Department:
Environmental Affairs
REPUBLIC OF SOUTH AFRICA



CRITICAL ECOSYSTEM
PARTNERSHIP FUND



HANS HOEISEN
charitable trust

Liebe Patterson
Foundation

MANAGED BY NEDBANK PRIVATE WEALTH