



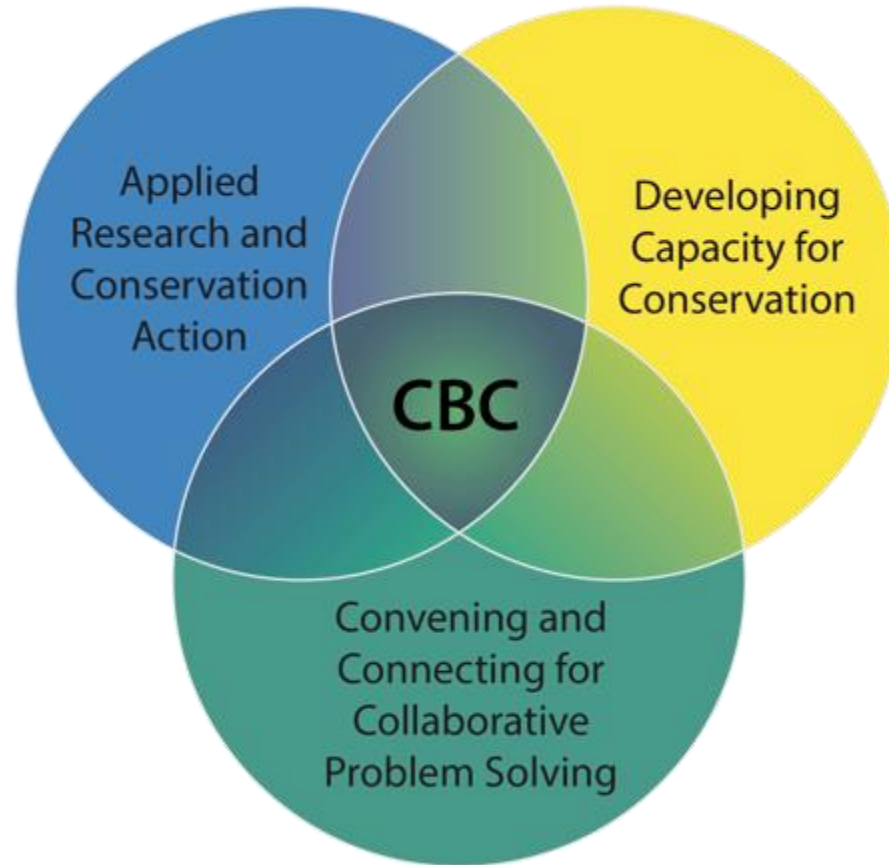
AMERICAN MUSEUM OF NATURAL HISTORY

CENTER FOR BIODIVERSITY AND CONSERVATION

Linking Biological and Cultural Diversity through Indicators of Wellbeing

Eleanor Sterling and Pua'ala Pascua
Center for Biodiversity and Conservation
American Museum of Natural History

Center for Biodiversity and Conservation



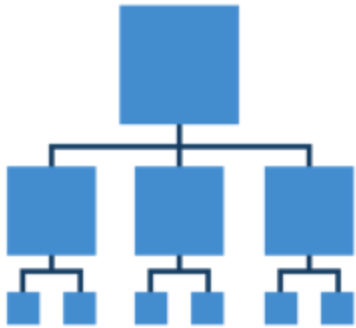
The CBC transforms knowledge - from diverse sources and perspectives, and spanning areas of scientific research as well as traditional and local knowledge - into conservation action.

Implementing a Biocultural Approach



Linking local to global indicators

Global goals and indicators



Local goals and indicators



Linking local to global indicators



What are the benefits of using a biocultural approach?



What are some examples?





Sterling et al. (2017) **Culturally-Grounded Indicators of Resilience in Social-ecological Systems.** *Environment and Society: Advances in Research.* Special issue on Measurement and Metrics.

Selected Examples

- Relating to “Socioecological mobility”
 - Households and communities are able to move around between different production activities and locations as necessary (Source: Satoyama Initiative/Biodiversity International work on SEPLS)
- Relating to “Community vitality”
 - Strong families and kinship networks, built over generations, have others they can rely on in times of need and neighbors they can trust (Source: Vanuatu Alternative Indicators of Wellbeing)
- Relating to “Socio-cultural/Nā ‘Ike”
 - Number of families that obtain at least a portion of their sustenance from natural resources harvested within the land/seascape that they reside within (Source: HCA Watershed Snapshot)

More from Others

- Relating to “Subsistence: Harvesting food & materials for self, family, or community:
 - Access to resources and knowledge; ability to meet costs and obtain permits (Source: Breslow et al. 2016)
- Relating to “Supporting Identities”
 - Provision of opportunities by nature for people to develop a sense of place, belonging, rootedness or connectedness, associated with different entities of the living world (e. g. cultural, sacred and heritage landscapes, sounds, scents and sights associated with childhood experiences, iconic animals, trees or flowers) (Source: IPBES Reporting Categories of NCP as described in Dias et al. 2018)

More on Our Current Efforts



AMERICAN MUSEUM OF NATURAL HISTORY
CENTER FOR BIODIVERSITY AND CONSERVATION

The Action Group on Knowledge Systems and Indicators of Wellbeing

April 21-22, 2018 • New York City



Convention on
Biological Diversity



United Nations
Educational, Scientific and
Cultural Organization



SwedBio
A programme of Swedish research funding



SGP The GEF
Small Grants
Programme





Meeting Objectives



Themes Discussed

Importance of:

- Sharing stories and exchanging local experiences with monitoring and reporting tools
- Consultation and as a means for inclusion and visibility in decision-making
- Collaboration across multiple scales to strengthen the impact of IPLC initiatives

Factors that enable wellbeing:

- Connection to place
- Secure tenure to land
- Food sovereignty



Selected indicators discussed

- People who *should* know, including youth, recognize and use traditional names, uses of plants/animals, and follow traditional occupations
- Local values surrounding traditional practices are known and respected
- Degree to which national values acknowledge and respect local traditions

Selected indicators contd.

- Indigenous customary lands are able to provide for adequate resources for communities to support their cultural needs
- Place-based knowledge/practices are incorporated in educational curriculum



Deliverables Under Development

- Online directory of tools and resources
- Input for possible elements of future UN CBD post-2020



- framework (potential elements for Article 8j of Traditional Knowledge)
- Additional subgroup outputs:
 - Concept map of national/global reporting processes

Mahalo nui loa.

Eleanor Sterling –
esterling@amnh.org

Pua'ala Pascua –
ppascua@amnh.org